

BCGS

British Geriatrics Society
Improving healthcare
for older people



GERIATRIC MEDICINE Acute Hospital Outcomes 2021/22 Report

An overview of outcomes of acute geriatric medicine services
in Scotland before, during and after the covid lockdown

SCoOP

1495



**UNIVERSITY OF
ABERDEEN**

Contents

Working Group	3
SCoOP Steering Group	4
Foreword	5
Scottish Care of Older People Project	7
Executive Summary	8
Admission Demographics	9
Activity	16
Length of stay	18
Mortality	23
Readmissions	24
Hospital@Home	25

Individual Hospital Reports

University Hospital Crosshouse.....	26
Borders General Hospital.....	27
Dumfries & Galloway Royal Hospital.....	28
Victoria Hospital.....	29
Forth Valley Royal Hospital.....	30
Aberdeen Royal Infirmary.....	31
Glasgow Royal Infirmary.....	32
Inverclyde Royal Hospital.....	33
Queen Elizabeth University Hospital.....	34
Royal Alexandra Hospital.....	35
Raigmore Hospital.....	36
University Hospital Hairmyres.....	37
University Hospital Wishaw.....	38
University Hospital Monklands.....	39
Royal Infirmary of Edinburgh.....	40
St John's Hospital.....	41
Western General Hospital.....	42
Ninewells Hospital.....	43
Perth Royal Infirmary.....	44

Data Sources	45
---------------------------	-----------

SCoOP Geriatric Medicine Acute Hospital Outcomes Report

Working Group

Dr Roy L Soiza

Consultant Physician, NHS Grampian
SCoOP Acute Care Audit Lead

Dr Chirantha Premathilaka

Clinical Research Fellow, University of Aberdeen

Dr Christine McAlpine

Consultant Stroke Physician, Glasgow Royal Infirmary
SCoOP Steering Group Co-Chair

Professor Phyo K Myint

Clinical Chair in Medicine of Old Age, University of Aberdeen
SCoOP Steering Group Co-Chair



SCoOP Geriatric Medicine Acute Hospital Outcomes Report

SCoOP Steering Group

Co-Chairs

Prof P K Myint
University of Aberdeen

Dr C McAlpine
BGS Scotland

Dr A Einarsson
NHS Shetland

Miss B Elsberger
Breast Oncology Lead

Dr L Mitchell
Healthcare Improvement Scotland

Dr A MacDonald
NHS Highland

Dr A Falconer
NHS Lanarkshire

Dr M McElroy
NHS Greater Glasgow & Clyde

Prof Sir Lewis Ritchie
University of Aberdeen

Dr S Shenkin
University of Edinburgh

Dr R L Soiza
Scottish Society of Physicians

Dr R Thomas
NHS Fife

Mrs K Wood
Older People Pharmacy Services

Secretary

Dr AIC Donaldson
NHS Grampian

Dr A Barugh
NHS Lothian

Dr P Cantley
SCoOP Social Media Lead

Dr L McGarrity
RCoA Scotland

Dr L Shields
NHS Grampian

Members

Dr L Beveridge
NHS Tayside

Dr A Byrne
NHS Forth Valley

Dr R Wallace
NHS Ayrshire & Arran

Mr D MacDonald MBE
Modernising Patient Pathways Programme

Dr A Conley
Dumfries & Galloway

Dr C Copeland
BGS

Dr J Lonnen
NHS Borders

Prof S Moug
ELLSA

Dr T Quinn
University of Glasgow

Mr G Ramsay
University of Aberdeen

**SCoOP Secretariat: Room 1.130,
Polwarth Building,
Ageing Clinical & Experimental
Research Team,
University of Aberdeen
Tel: +44 (0) 1224 437963**

Foreword

We are pleased to present the third Scottish Care of Older People (SCoOP) acute hospital outcomes report which provides invaluable data-driven evidence on the care of older adults presenting to our hospitals. This national report, based on two years of data, highlights the variations in care and outcomes that exist across the country, and aims to stimulate discussion among healthcare professionals, policymakers and stakeholders.

While data has its limitations, it is a helpful tool for reducing unwanted variation in care and identifying areas for improvement. It is particularly important in the context of the COVID-19 pandemic which presented unique challenges for healthcare providers. Admissions were down by 15% during that first year while mortality increased, underscoring the need for ongoing vigilance and innovation in the care of older adults.

Some variability should be expected around Scotland due to the differences in the Boards in terms of deprivation codes, remote and rural and existing services e.g., community hospitals. For instance, the high percentage of people staying longer than thirty days may reflect the difficulties in accessing home care for people, care home provision, guardianship and/ or availability of rehabilitation services in the community.

The report also sheds light on the impact of deprivation on healthcare outcomes, with the highest levels of deprivation concentrated in the West coast of Scotland. This underscores the importance of addressing health inequalities and ensuring that all patients receive the care and support they need. It is also important to note the increase in younger people living with frailty comparing 2020 to 2022 and the potential links with deprivation codes.

On a positive note, the report highlights the growth of hospital at home services which saw a 15% increase in the number of patients. This approach enables collaboration and integration across health and social care, and holds promise for improving outcomes for older adults in Scotland. Furthermore, the report found that those hospitals with dedicated frailty units had a higher proportion of discharges within 48 hours and shorter length of stay for older adults. This highlights the importance of specialised care for this population and the benefits of frailty units improving outcomes, senior decision making at the front door and reducing healthcare costs. It is also reassuring that those hospitals, in the main with a shorter length of stay did not have an increase in readmissions.

Overall, this report provides an important snapshot of the state of care for the older adults presenting to our hospitals in Scotland and we hope it will provide a catalyst for ongoing reflection, improvement, and innovation in the years to come.



Dr Lara Mitchell
Consultant Physician
Older Adult Services South Sector
Queen Elizabeth University Hospital



Dr Rowan Wallace
Consultant Geriatrician
University Hospital Crosshouse
NHS Ayrshire and Arran
Chair, BGS Scotland

Hospitals Report 2021/22

This is SCoOP's third Acute Hospitals Report to NHS Boards and Health and Social Care Partnerships. It aims to help them assess their specialist acute geriatric medicine services' performance by highlighting variation in outcomes across Scotland.

There are many factors that can account for variation in outcomes, including differences in case-mix, service configuration, resources and staffing. The report does not attempt to explain the variation but aims to stimulate thoughtful discussion, learning and action.

The report should be used to help benchmark some key patient outcomes and inspire a culture of inter-organisational learning and continuous improvement. The wider goal is to reduce unwarranted and unjustifiable variation in outcomes, which may represent a threat to patient safety and/or a failure to learn from best practice.

The report includes figures comparing outcomes across 19 acute hospital sites and a summary for each hospital site. Data for some smaller hospital sites were removed for disclosure reasons.

For the purposes of this report, admissions were only counted where the majority of the total hospital stay was spent in an acute hospital site.

All data were provided by Public Health Scotland. These rely on health boards correctly identifying and coding admissions under geriatric medicine teams.

What is SCoOP?

“SCoOP is a Scottish national evaluation project focusing on care of older people across Scotland in both primary and secondary care settings.”

SCoOP has the following overarching aims:

- To evaluate the variation in service provision for older people who require health and social care in various settings to serve as a driver for standardisation and improvement of care across Scotland
- To provide benchmarking tools for various care aspects of older people in Scottish NHS health and social care settings to support improvement work in services across Scotland
- To provide a health intelligence and knowledge transfer hub for service users, health care providers and policy makers through annual evaluation cycles

This is a joint initiative set up in late 2016 by three key partners: Healthcare Improvement Scotland, the British Geriatrics Society, and the University of Aberdeen as the lead academic institution, with representation from the other Scottish universities with clinical academic departments in Geriatric Medicine.



Executive summary

- The report measured outcomes of emergency admissions to geriatric medicine in the 19 largest hospitals in Scotland. Since our last report, Ayr Hospital ceased to provide acute geriatric medicine services so is no longer included.
- The covid pandemic saw specialty admissions fall overall by 15% in 2020/21, before largely recovering to levels close to pre-pandemic activity in 2021/22.
- Changes in annual admission numbers varied widely across hospitals, with some units busier than ever while others saw a large decline in admissions.
- Case-mix in respect to age and social deprivation varied widely across hospitals, though within each hospital it remained broadly consistent before and after the pandemic .
- The previously noted wide variation in length of stay across hospitals remain, with up to 20-fold differences. Hospitals with higher activity levels generally had lower lengths of stay, but this does not explain all the variation.
- Same day discharges (discharges on the day of admission) virtually never occur in some hospitals, but are common (up to 9% of all admissions) in others.
- As in previous years, Aberdeen Royal Infirmary had a median length of stay less than half that of any other hospital throughout the pandemic but higher than expected readmission rates.
- Differences in readmission rates and mortality were varied up to two-fold between hospitals. Case-mix may account for some of the variation.
- Death rates were higher at 18% during 2020/21, before falling to 16.5% in 2021/22, which was slightly higher than the 15% recorded in 2019/20.
- Ten health boards have now reported the activity of their 'Hospital at Home' schemes from four such schemes in the last period (2018/19).
- The report highlights significant variation in outcomes across the country, and provides potential benchmarks for future quality improvement and greater consistency in outcomes.

Mean annual admissions to Geriatric Medicine Apr 2017- Mar 2020

by sex, age group and quintiles of social deprivation indices

Hospital	Average Admissions	Female %	Average Age Group Distribution (%)				Average Deprivation Distribution by Quintile* (%)				
			65-74	75-84	85-94	95+	Q1	Q2	Q3	Q4	Q5
St John's Hospital	532	61.9	22.0	42.9	32.9	2.2	15.2	35.4	21.6	16.2	11.8
Raigmore Hospital	633	55.1	17.6	39.8	37.9	4.7	10.9	19.6	29.9	30.0	9.2
Perth Royal Infirmary	720	58.2	9.1	36.1	47.2	7.6	6.3	16.2	25.8	28.6	24.3
Inverclyde Royal Hospital	890	62.4	18.0	39.5	38.0	4.6	45.8	12.3	15.9	11.9	13.7
Borders General Hospital	1107	58.1	9.7	34.7	48.7	6.9	7.6	21.3	36.9	27.8	6.4
Dumfries & Galloway Royal Infirmary	886	58.7	7.8	42.2	44.7	5.3	6.5	24.9	41.9	18.7	8.2
University Hospital Crosshouse	1253	58.3	26.1	42.5	28.4	3.1	35.3	24.5	18.1	13.4	9.0
Ninewells Hospital	1453	58.1	8.2	36.0	48.7	7.0	22.5	20.3	15.8	22.8	17.7
Victoria Hospital	1738	59.5	12.9	39.6	42.3	5.3	23.1	27.0	20.3	19.1	11.2
Western General Hospital	1930	61.5	7.9	34.4	50.1	7.6	11.9	20.4	11.5	14.9	43.7
University Hospital Wishaw	1801	60.0	11.7	42.9	40.8	4.6	33.0	33.2	16.3	11.7	5.4
Royal Alexandra Hospital	2065	63.6	14.6	40.0	40.6	4.8	28.9	27.1	18.6	13.1	12.4
Royal Infirmary of Edinburgh at Little France	2568	63.6	5.1	38.2	49.4	7.3	11.9	25.8	15.0	16.0	30.9
University Hospital Hairmyres	2822	61.7	13.7	44.0	38.4	3.9	21.4	28.3	23.8	13.2	13.9
University Hospital Monklands	3003	60.8	19.8	45.3	32.2	2.7	40.2	27.9	15.5	11.1	5.8
Aberdeen Royal Infirmary	3530	58.9	7.5	37.5	49.4	5.6	9.2	20.0	22.0	23.8	25.5
Glasgow Royal Infirmary	4165	59.4	16.3	45.8	34.2	3.7	51.0	20.4	10.0	10.5	7.3
Forth Valley Royal Hospital	4855	56.7	7.6	53.7	34.7	3.9	18.8	23.8	23.2	20.0	13.9
Queen Elizabeth University Hospital	6613	62.8	13.3	40.9	40.5	5.3	34.3	19.7	11.6	12.7	21.7
Total	42566	60.3	12.4	42.2	40.5	4.9	26.0	23.3	18.1	16.1	16.3

*Q1 = most deprived, Q5 = least deprived

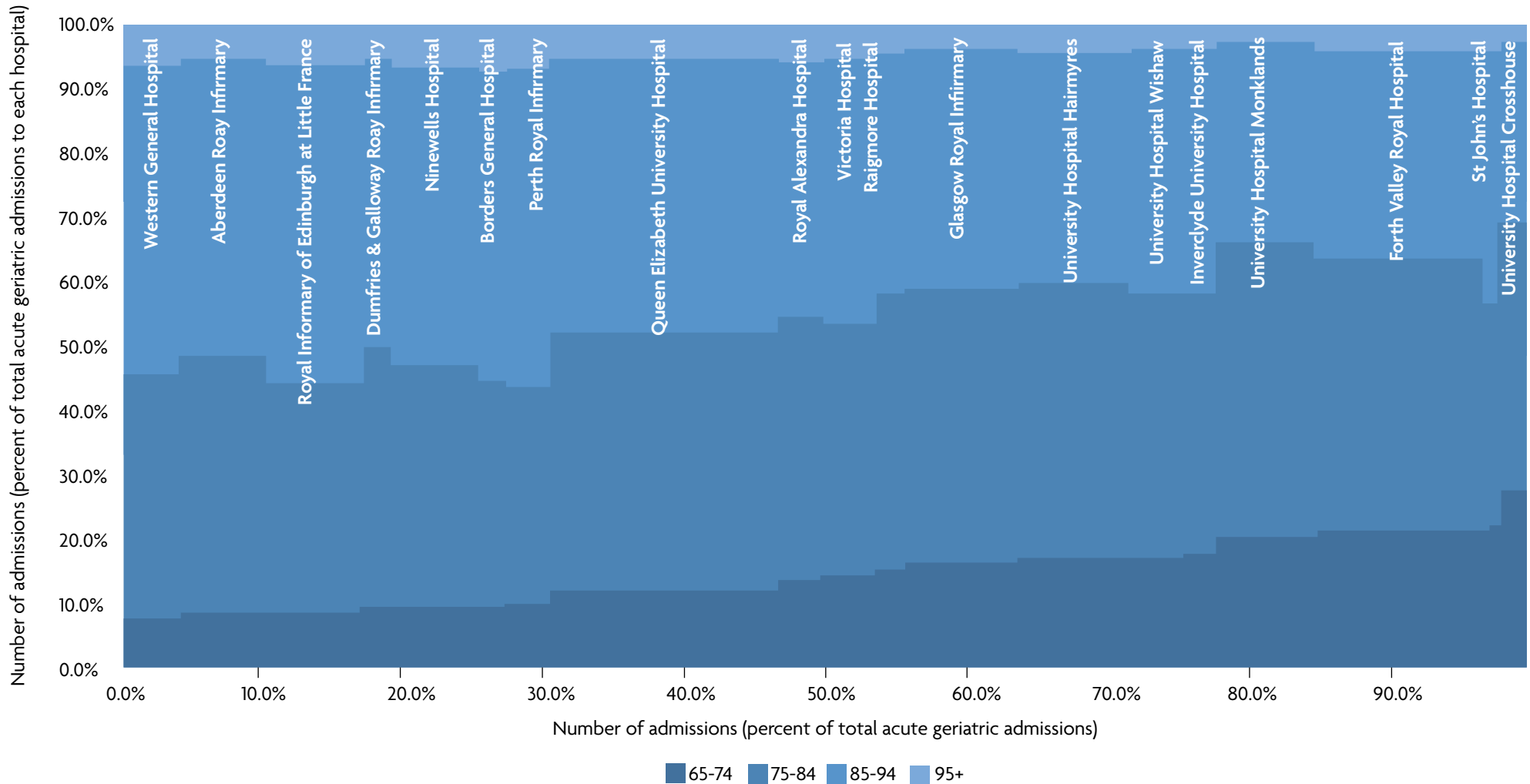
Distribution of admissions to Geriatric Medicine 2020/21

by sex, age group and quintiles of social deprivation indices

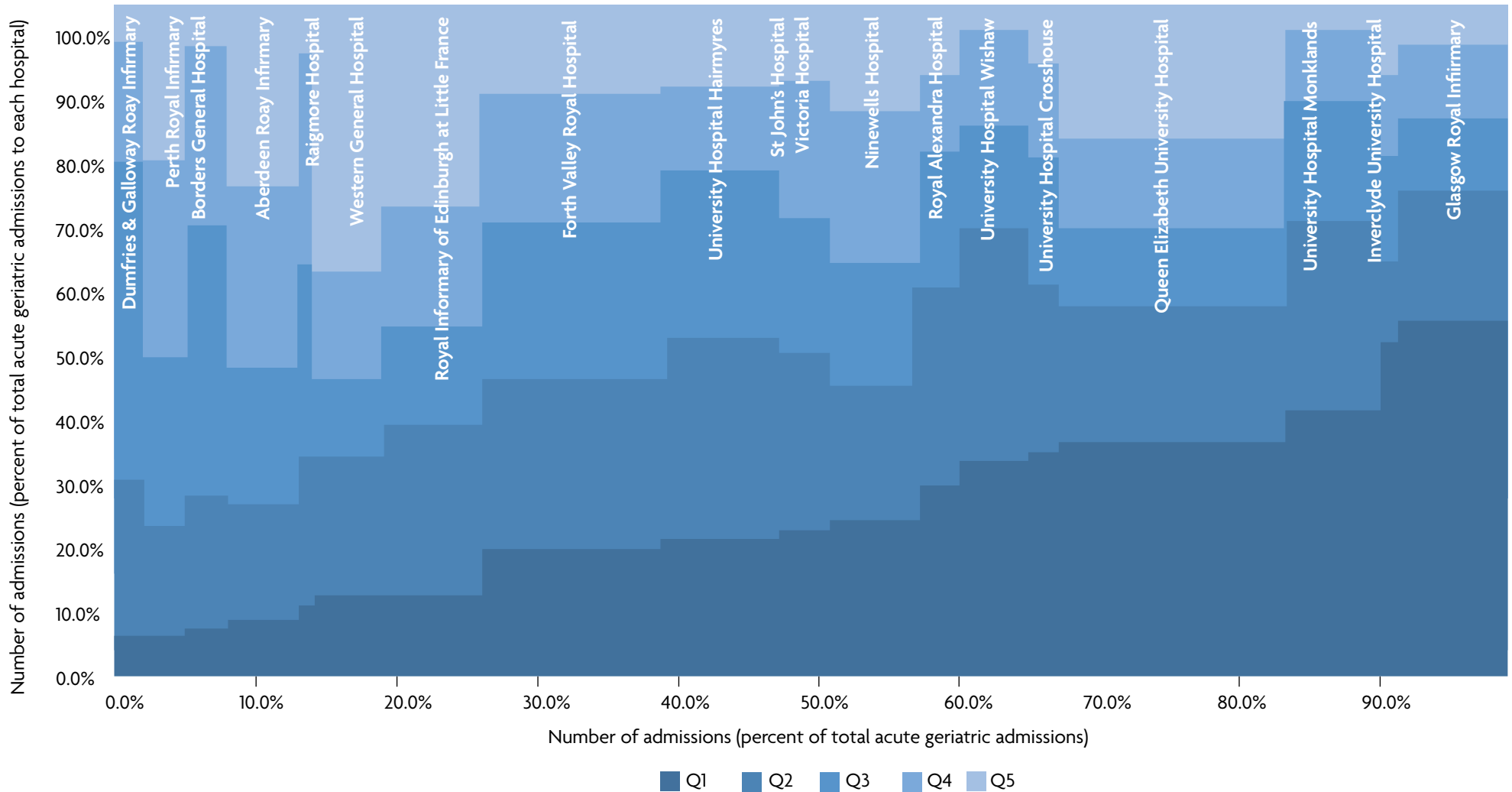
Hospital	Admissions	Female %	Average Age Group Distribution (%)				Average Deprivation Distribution by Quintile* (%)				
			65-74	75-84	85-94	95+	Q1	Q2	Q3	Q4	Q5
St John's Hospital	272	59.9	22.1	35.3	39.0	3.7	20.6	32.7	16.9	17.3	12.5
Raigmore Hospital	578	57.6	14.7	43.9	36.7	4.7	10.7	22.0	27.9	30.4	9.0
Perth Royal Infirmary	1064	60.4	9.7	34.1	49.5	6.7	6.8	15.6	24.6	28.7	24.3
Inverclyde Royal Hospital	655	61.4	16.9	41.7	37.9	3.5	49.2	11.9	15.0	11.8	12.2
Borders General Hospital	957	56.5	9.0	36.1	48.2	6.8	7.0	19.2	39.6	26.1	8.0
Dumfries & Galloway Royal Infirmary	1038	51.3	8.8	41.5	44.9	4.8	6.5	22.8	45.9	17.7	7.1
University Hospital Crosshouse	1041	53.9	27.5	42.1	28.4	2.0	32.6	24.9	18.6	13.7	10.2
Ninewells Hospital	2007	58.7	9.0	38.2	46.4	6.4	23.2	19.9	17.7	21.7	17.5
Victoria Hospital	1511	60.2	14.3	39.7	41.0	5.0	21.9	25.6	19.6	19.5	13.4
Western General Hospital	1797	59.3	7.9	37.8	48.2	6.1	11.7	21.0	11.0	15.6	40.7
University Hospital Wishaw	1637	61.1	16.4	42.2	38.1	3.4	31.9	33.5	15.1	14.1	5.3
Royal Alexandra Hospital	1212	67.7	13.8	40.9	39.9	5.4	28.5	28.7	19.7	10.9	12.2
Royal Infirmary of Edinburgh at Little France	2599	62.0	8.3	36.2	49.6	5.8	11.9	25.1	14.1	17.6	31.3
University Hospital Hairmyres	2874	57.5	16.2	43.3	36.5	3.9	20.5	29.0	24.2	12.3	14.0
University Hospital Monklands	2437	60.0	20.5	46.1	30.7	2.7	39.1	27.5	17.6	10.2	5.6
Aberdeen Royal Infirmary	1903	58.0	8.0	40.5	46.1	5.4	8.6	16.8	20.2	26.1	28.3
Glasgow Royal Infirmary	3009	59.8	15.7	43.5	37.2	3.6	52.0	19.0	10.8	10.5	7.7
Forth Valley Royal Hospital	4588	56.0	21.3	43.0	32.0	3.7	19.0	24.7	22.8	19.2	14.4
Queen Elizabeth University Hospital	5775	62.1	12.3	40.1	42.4	5.2	34.8	19.4	11.4	12.9	21.4
Total	36954	59.4	14.3	40.9	40.2	4.6	25.2	23.0	18.5	16.4	16.8

*Q1 = most deprived, Q5 = least deprived

Distribution of age across acute geriatric admissions to Scottish hospitals in 2020/21 by age group



Deprivation index of acute geriatric admissions to Scottish hospitals in 2021/21 by deprivation quintile



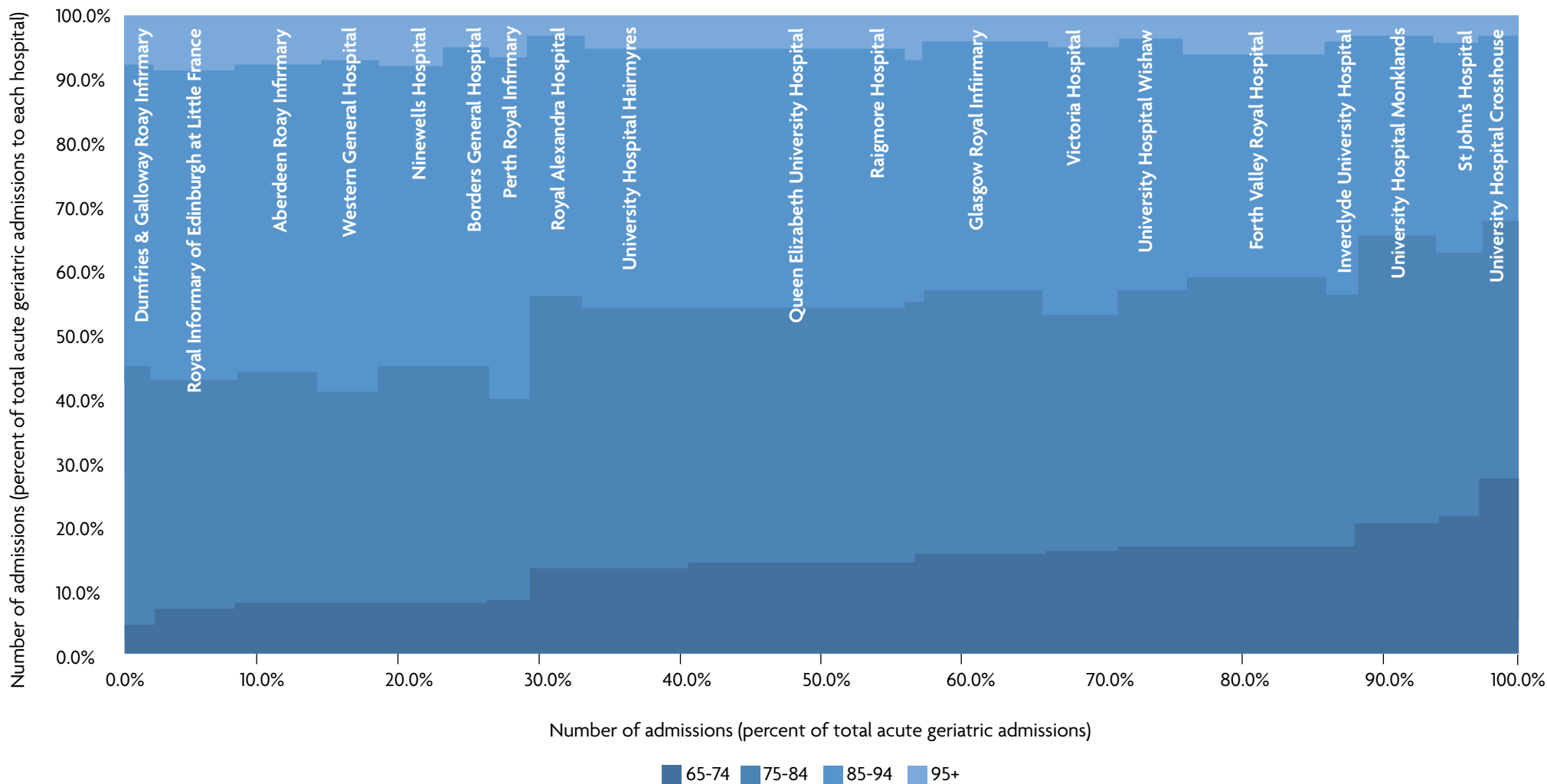
Distribution of Geriatric Medicine admissions 2021/22

by sex, age group and quintiles of social deprivation indices

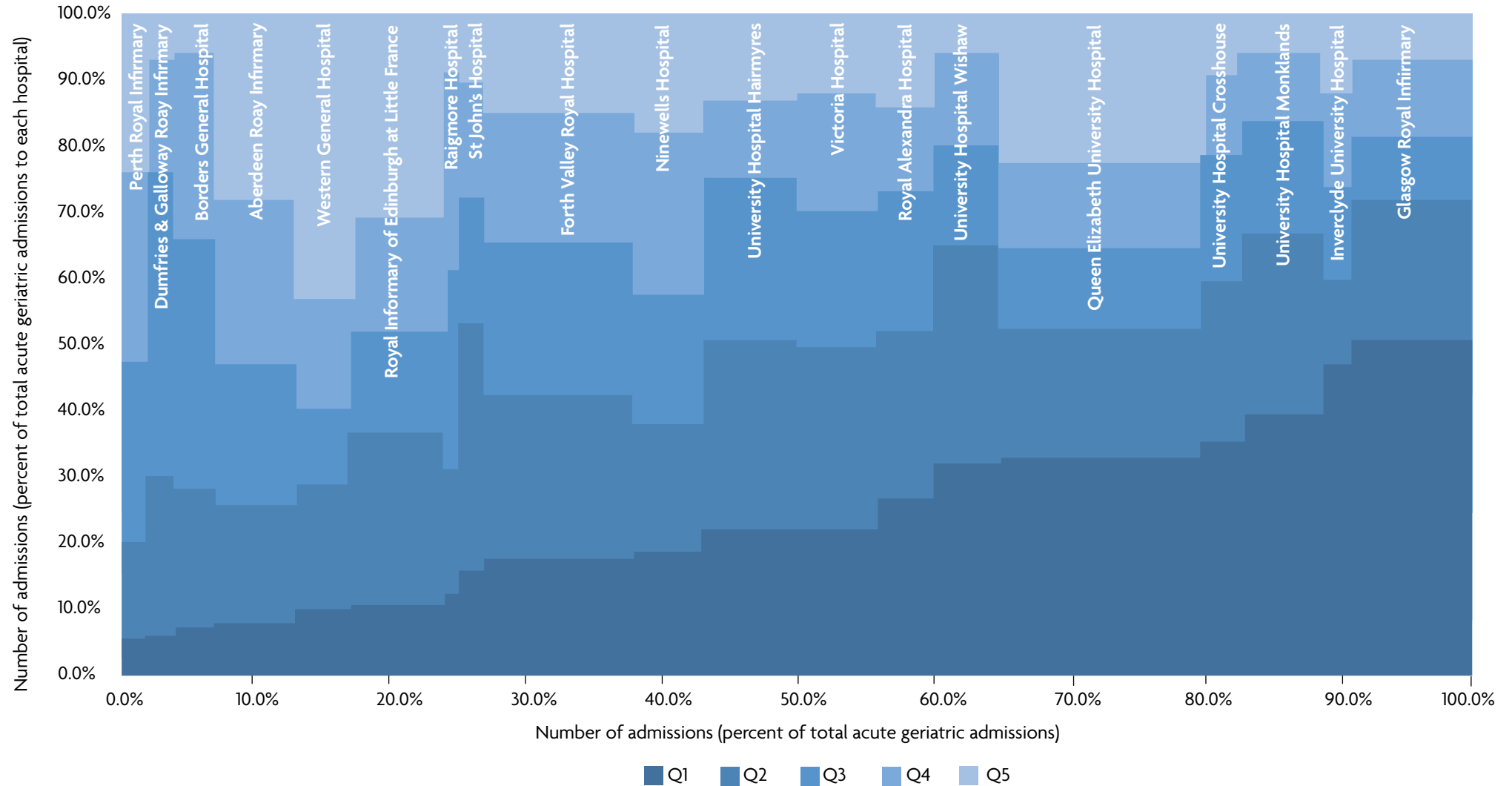
Hospital	Admissions	Female %	Average Age Group Distribution (%)				Average Deprivation Distribution by Quintile* (%)				
			65-74	75-84	85-94	95+	Q1	Q2	Q3	Q4	Q5
St John's Hospital	989	56.2	21.5	41.8	33.8	2.9	16.3	36.5	19.3	17.2	10.7
Raigmore Hospital	541	54.9	15.7	39.6	39.4	5.4	12.4	19.2	29.6	29.8	9.1
Perth Royal Infirmary	968	60.6	8.3	32.1	53.9	5.7	6.2	14.2	27.4	28.5	23.8
Inverclyde Royal Hospital	590	64.4	17.3	39.5	39.7	3.6	46.8	13.1	13.9	14.1	12.2
Borders General Hospital	1235	55.1	8.0	37.2	50.0	4.8	7.7	20.4	38.0	27.3	6.6
Dumfries & Galloway Royal Infirmary	941	58.8	5.0	40.0	47.3	7.8	6.6	23.8	45.8	16.7	7.1
University Hospital Crosshouse	1141	58.6	27.6	40.4	29.7	2.3	35.1	24.3	19.0	12.2	9.4
Ninewells Hospital	2129	58.4	8.0	37.2	47.6	7.3	19.2	19.2	19.3	24.6	17.8
Victoria Hospital	2105	60.0	16.2	37.1	41.9	4.8	22.6	26.7	20.6	17.5	12.5
Western General Hospital	1755	62.9	8.0	33.6	51.3	7.1	10.1	19.0	11.3	15.8	43.8
University Hospital Wishaw	2113	64.0	17.0	40.4	38.9	3.7	32.6	32.4	15.0	14.3	5.8
Royal Alexandra Hospital	1722	66.5	13.7	42.2	40.7	3.4	27.1	24.9	21.1	12.6	14.3
Royal Infirmary of Edinburgh at Little France	2598	61.8	7.5	35.7	48.8	8.0	11.0	26.0	15.3	16.8	30.9
University Hospital Hairmyres	3173	59.9	13.8	40.6	40.7	5.0	22.5	28.2	24.6	11.7	13.1
University Hospital Monklands	2814	59.9	21.0	44.3	32.0	2.7	39.6	27.3	16.5	10.8	5.9
Aberdeen Royal Infirmary	2578	59.0	8.0	35.9	48.8	7.4	8.0	18.1	20.5	25.8	27.6
Glasgow Royal Infirmary	3678	62.3	15.7	41.4	39.2	3.6	50.7	20.8	9.8	10.9	7.8
Forth Valley Royal Hospital	4492	59.0	17.1	41.7	35.7	5.5	18.3	24.4	22.6	19.8	14.9
Queen Elizabeth University Hospital	6409	61.4	14.2	40.1	40.7	5.0	32.8	19.9	11.5	13.4	22.5
Total	41971	60.6	14.0	39.5	41.4	5.1	24.9	23.3	18.6	16.5	16.6

*Q1 = most deprived, Q5 = least deprived

Distribution of age across acute geriatric admissions to Scottish hospitals in 2021/22 by age group



Deprivation index of acute geriatric admissions to Scottish hospitals in 2021/22 by deprivation quintile

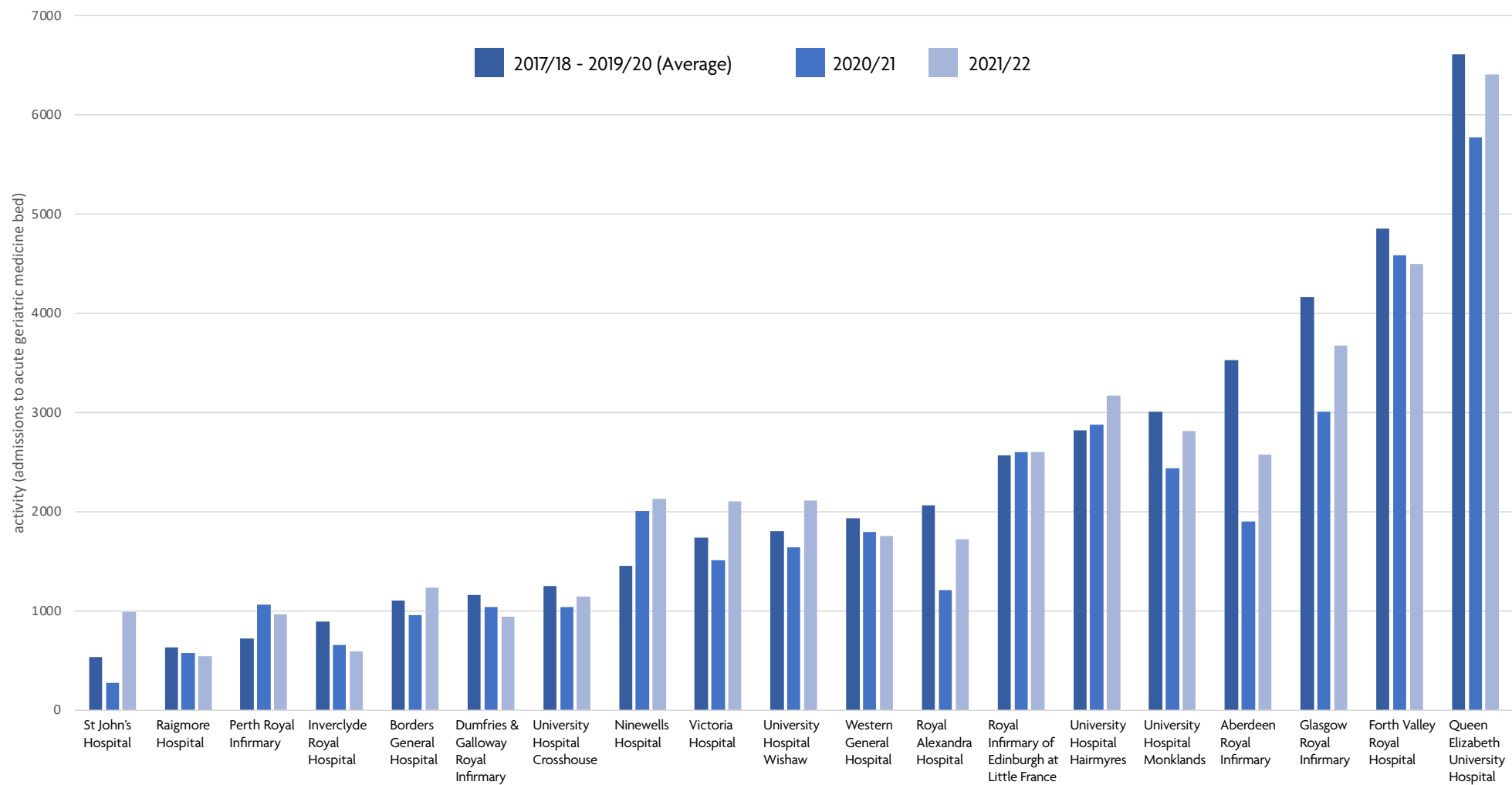


Acute Hospitals Report 2021/22 Activity

- The covid pandemic saw specialty admissions fall overall by 15% in 2020/21, before largely recovering to levels close to pre-pandemic activity in 2021/22.
- Since our last report, Ayr Hospital ceased to provide acute geriatric medicine services so is no longer included.
- Annual admissions varied widely across hospitals, but variations year to year even within the same hospital have been previously noted.
- Changes in annual admission numbers during the pandemic varied widely across hospitals, with some units busier than ever (e.g. Ninewells Hospital) while others saw a large decline in admissions (e.g. Royal Alexandra Hospital and Aberdeen Royal Infirmary).



Acute geriatric activity before, during and after the Covid-19 pandemic lockdowns



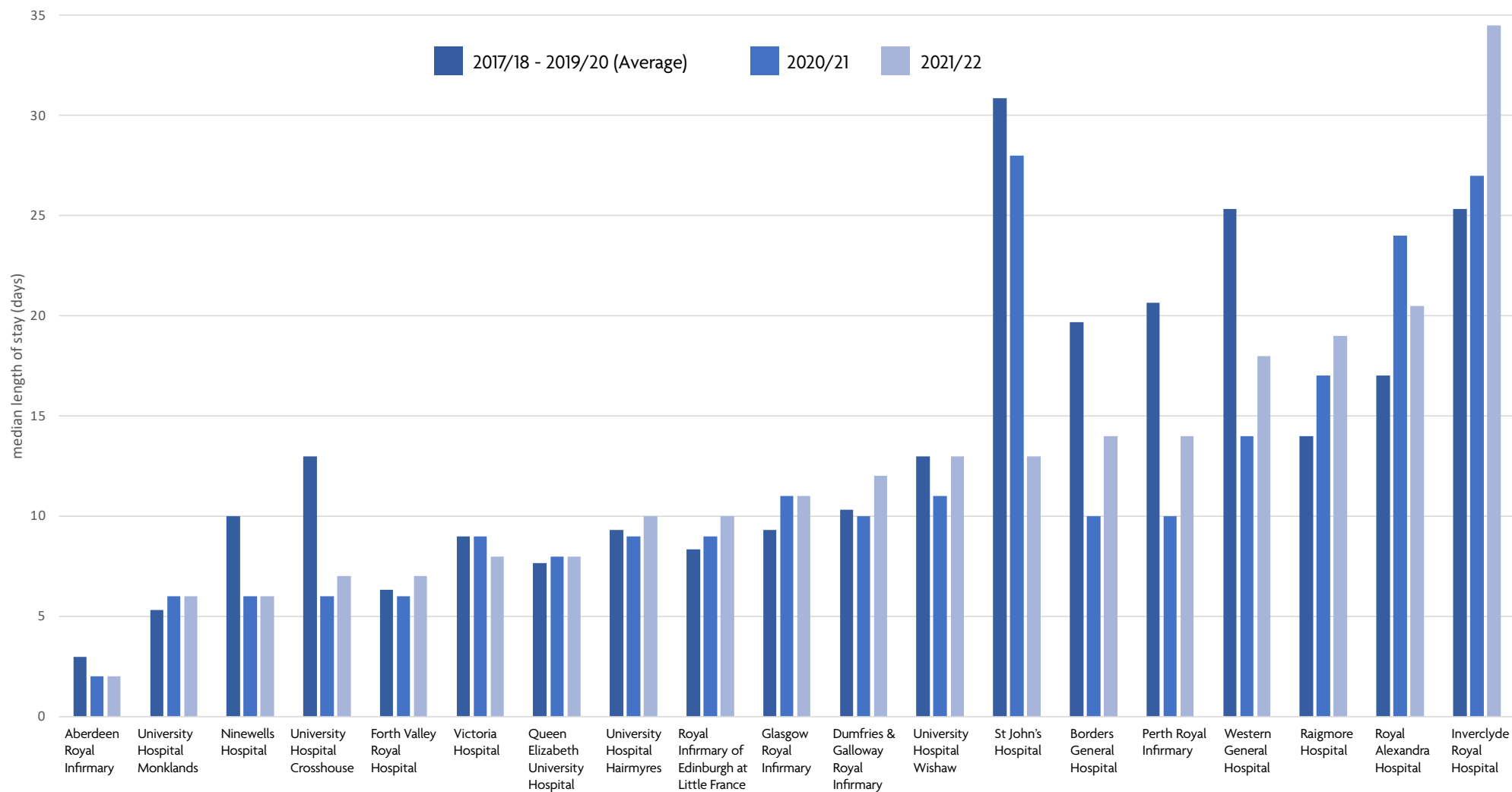
Acute Hospitals Report 2021/22

Length of stay

- There remains significant variation in median length of stay (LOS) across the country, from 2 to 34 days.
- The pandemic had marked, but widely varying, effects on median LOS within each hospital. Some hospitals had historic high LOS and others historic low LOS.
- Several hospitals markedly reduced their median LOS, e.g. Crosshouse, St.John's, Borders General and Western General Hospitals. However, Inverclyde, Royal Alexandra and Raigmore Hospitals increased their median LOS.



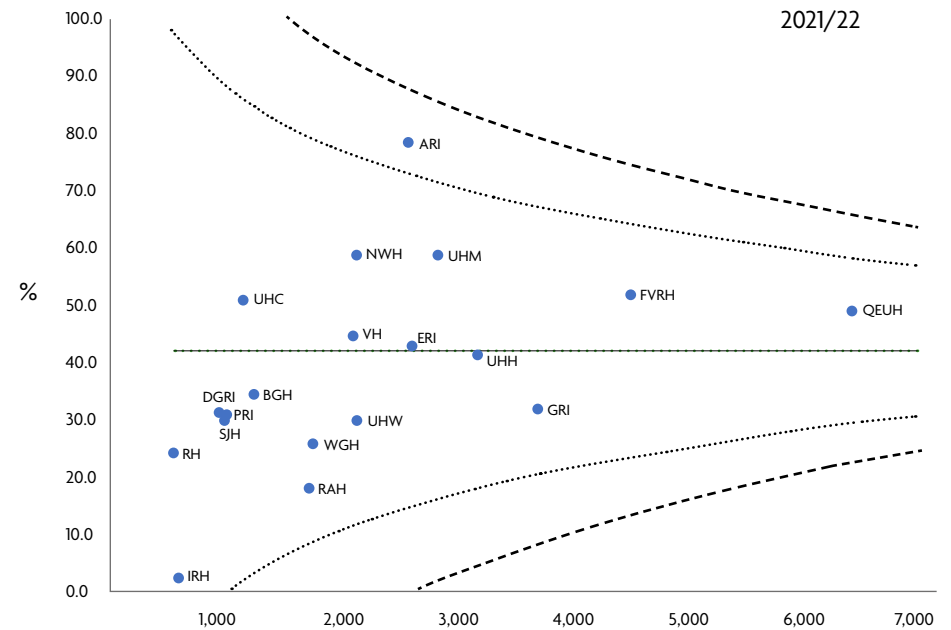
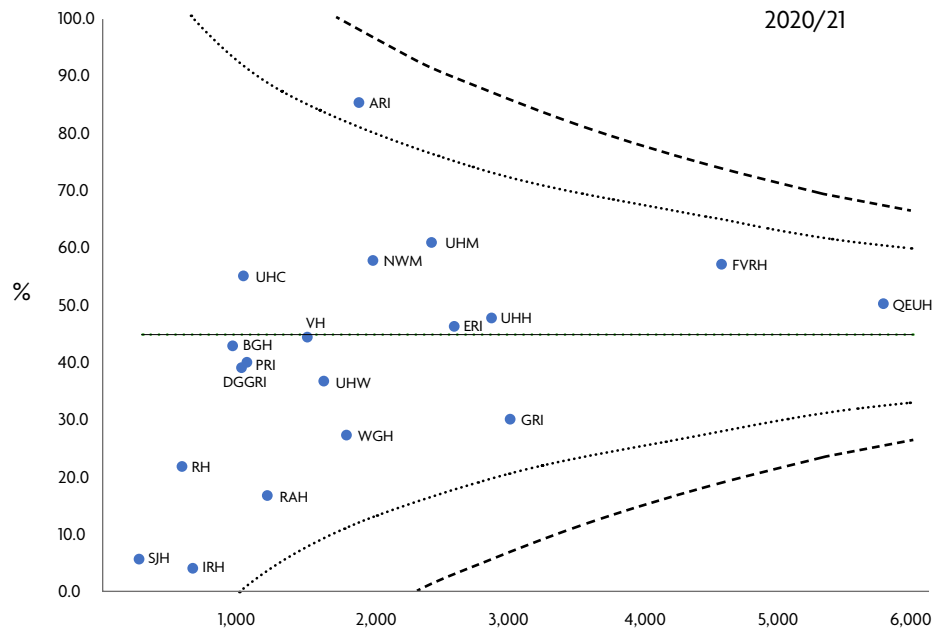
Median length of stays for acute geriatric admissions before, during and after the covid pandemic lockdown



Acute Hospitals Report 2021/22

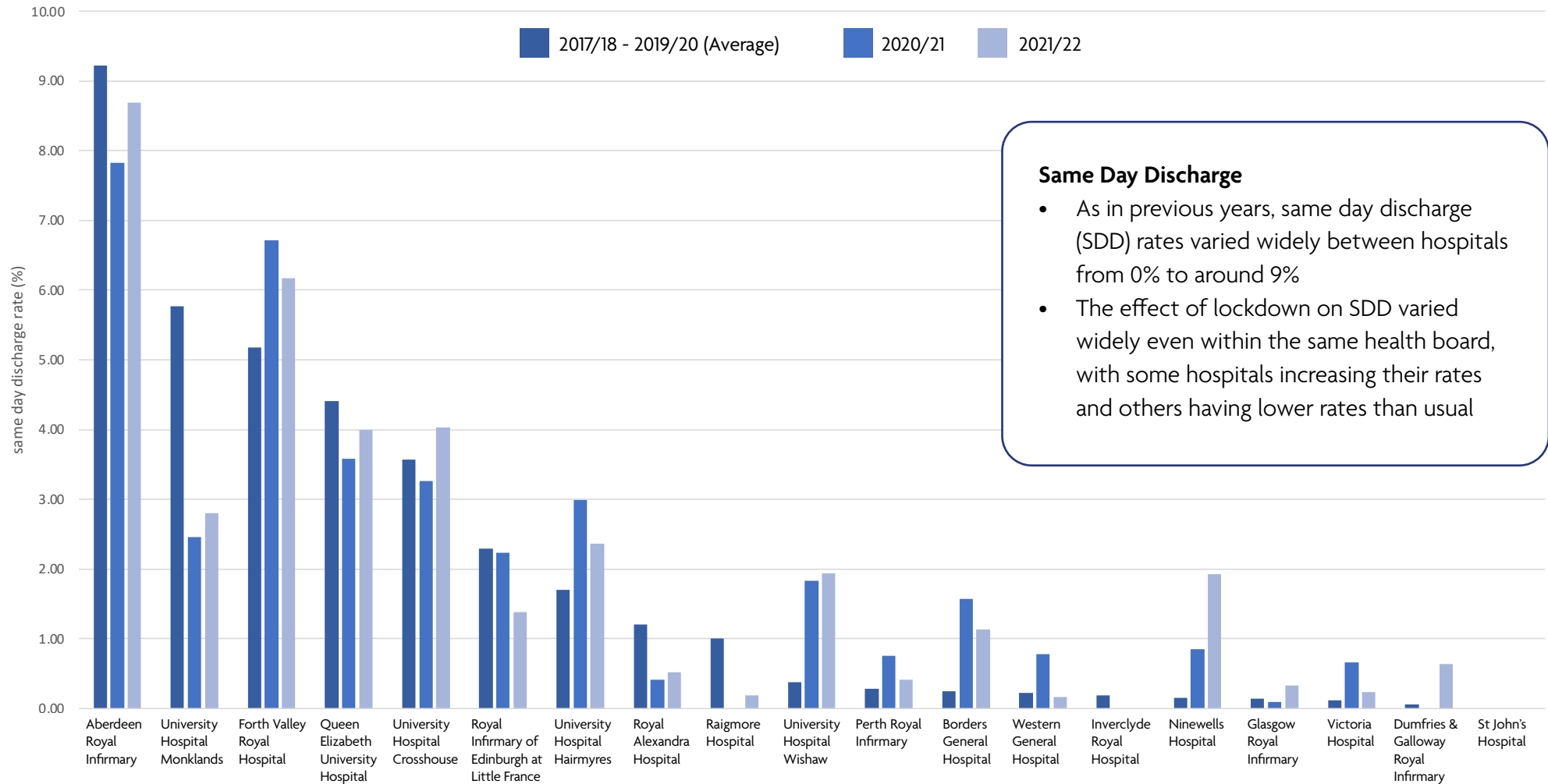
LOS by activity

Proportions discharged within 7 days of admission



- Funnel plots of all hospital's rates of discharge within 7 days of admission versus activity. Dotted lines represent 2 and 3 standard deviations from the mean
- Aberdeen Royal Infirmary discharged a higher than expected percentage of patients within 7 days

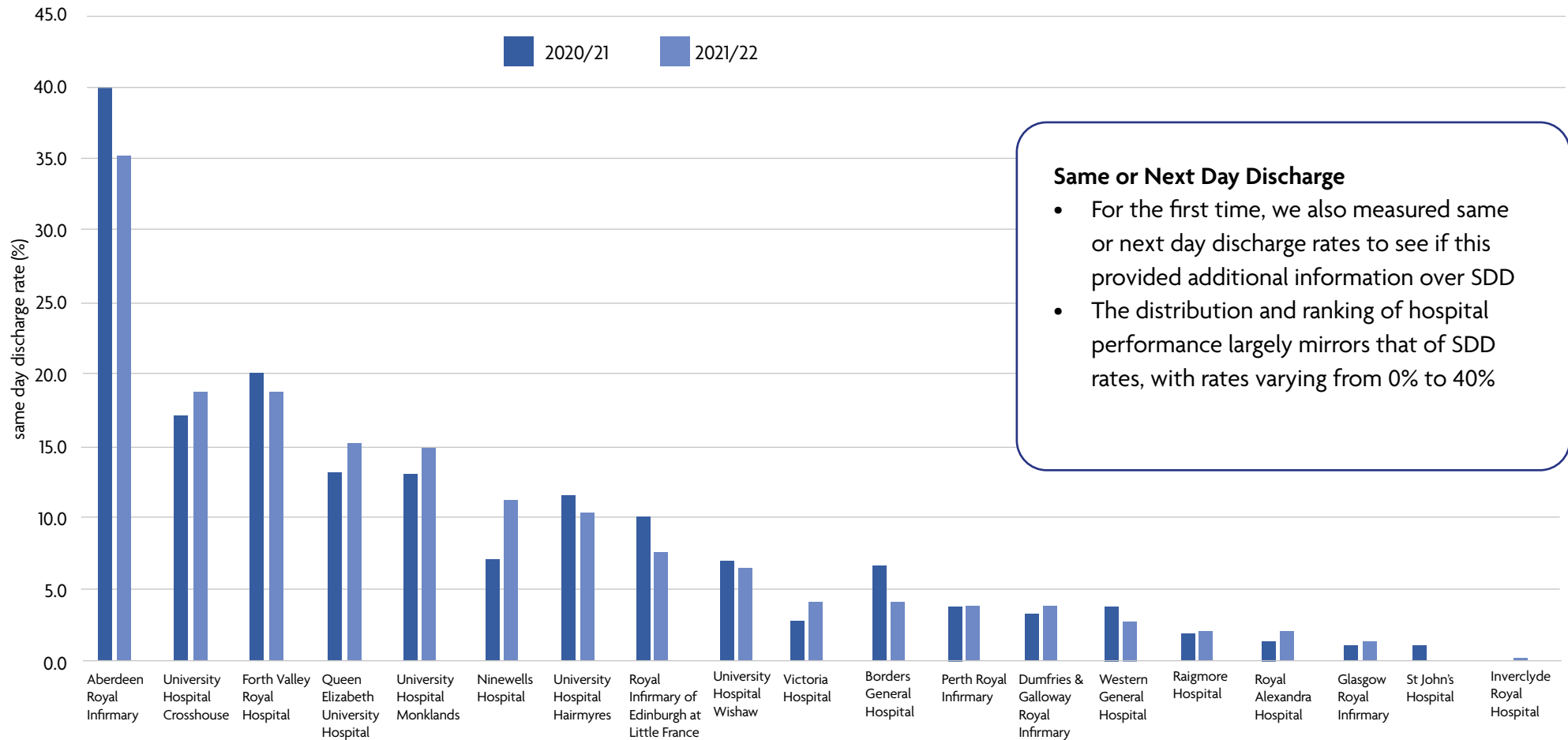
Same day discharge rate for acute geriatric admissions before, during and after the Covid-19 pandemic lockdown



Same Day Discharge

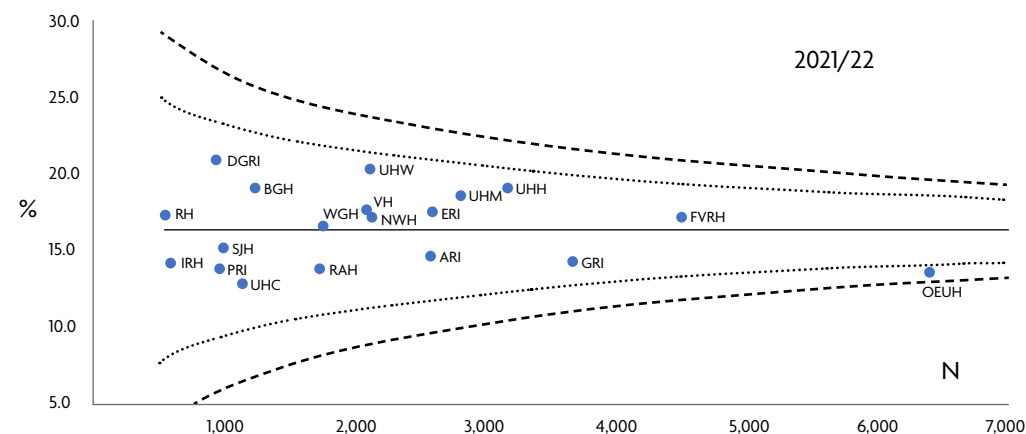
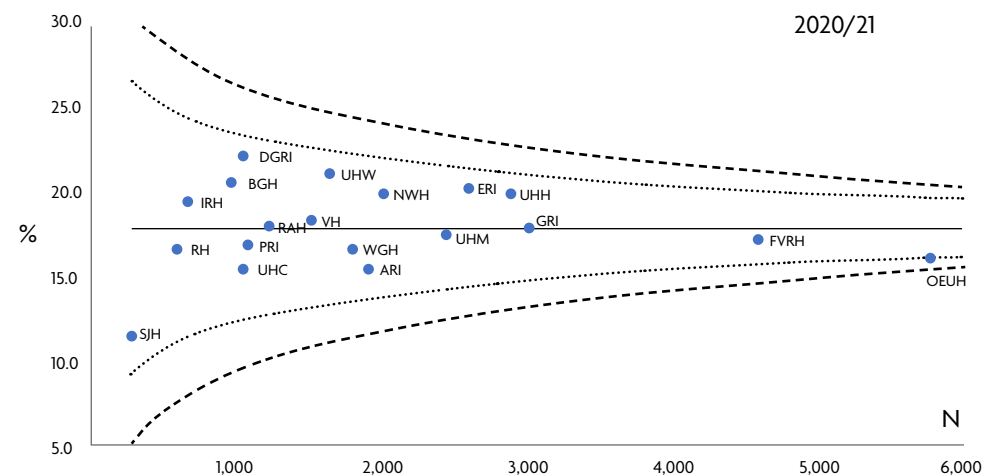
- As in previous years, same day discharge (SDD) rates varied widely between hospitals from 0% to around 9%
- The effect of lockdown on SDD varied widely even within the same health board, with some hospitals increasing their rates and others having lower rates than usual

Same or next day discharge rate for acute geriatric admissions during and after the Covid-19 pandemic lockdown



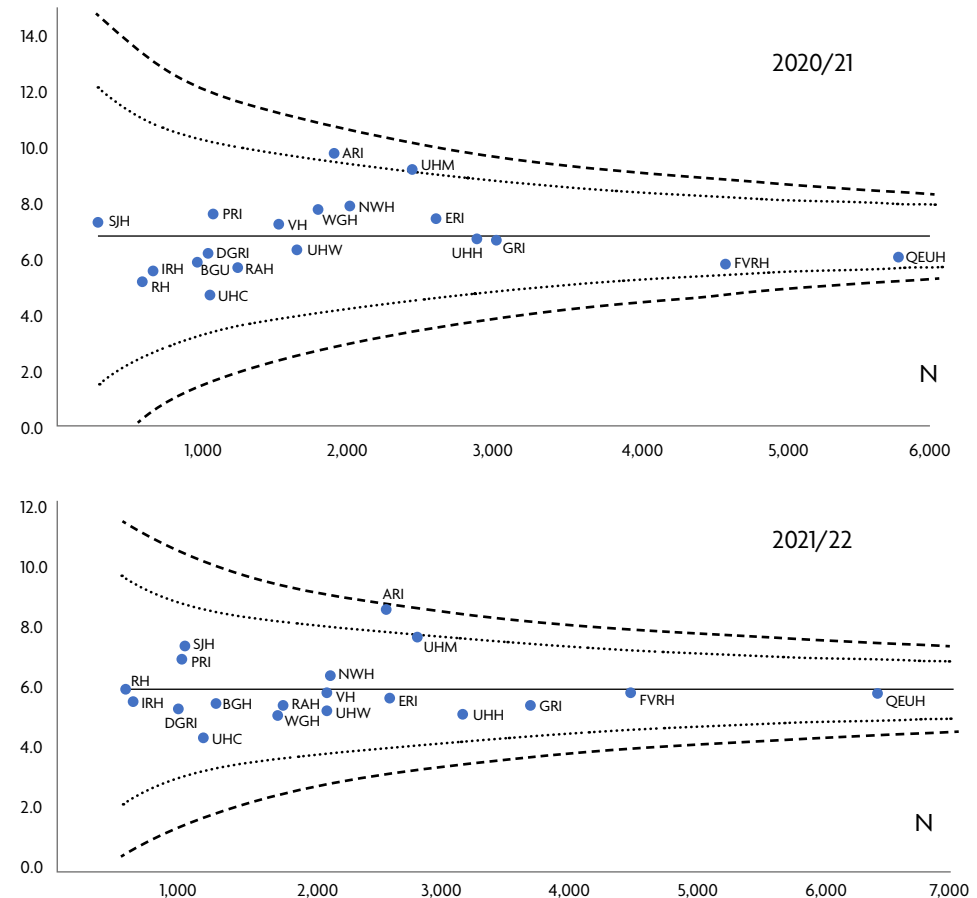
Deaths - 30 days post-admission

- From a historical average of 16.4%, mortality rate at 30 days rose to 17.9% in 2020/21. It had fallen as low as 15% in 2019-20
- In 2021/22, mortality was a more typical 16.6%
- As previously observed, there were two-fold differences in mortality rates across hospitals, with most hospitals maintaining a similar mortality rate year on year
- All 30-day mortality rates were within two standard deviations of the mean, except Queen Elizabeth University Hospital having lower than expected death rates



Readmissions - 7 days post-discharge

- Mean readmissions 7 days post discharge have remained steady since 2013 at about 6.5%
- Mean emergency readmission rates averaged 6.8% (range 5-10%) in 2020/21 but were lower at 5.9% in 2021/22 (range 4%- 9%)
- Mean emergency readmission rates at 28 days varied widely by site (mean 16%, range 12-22%)
- Both Aberdeen Royal Infirmary and Monklands had higher than expected readmission rates



Hospital@Home

- The number of hospital boards reporting activity from Hospital at Home services rose from four prior to the pandemic to six in 2020/21 and ten in 2021/22
- The total number of people seen has increased every year from its inception and reached a record 8774 in 2021/22
- Median duration of episodes ranges from 3 to 6 days across health boards

Hospital at Home - Number of episodes by financial year and NHS Board

NHS Board of Treatment	2014/15	2015/16	2016/17	2017/18	2018/19	2019/20	2020/21	2021/22
NHS Ayrshire and Arran								30
NHS Borders								45
NHS Fife	643	1941	2094	1943	1742	1642	1425	1364
NHS Forth Valley								640
NHS Grampian					153	352	403	542
NHS Greater Glasgow								16
NHS Lanarkshire	616	2387	2872	3021	3099	2916	2984	2735
NHS Lothian	138	1615	1904	2322	2580	2803	2970	3011
NHS Tayside							184	232
NHS Western Isles							93	159

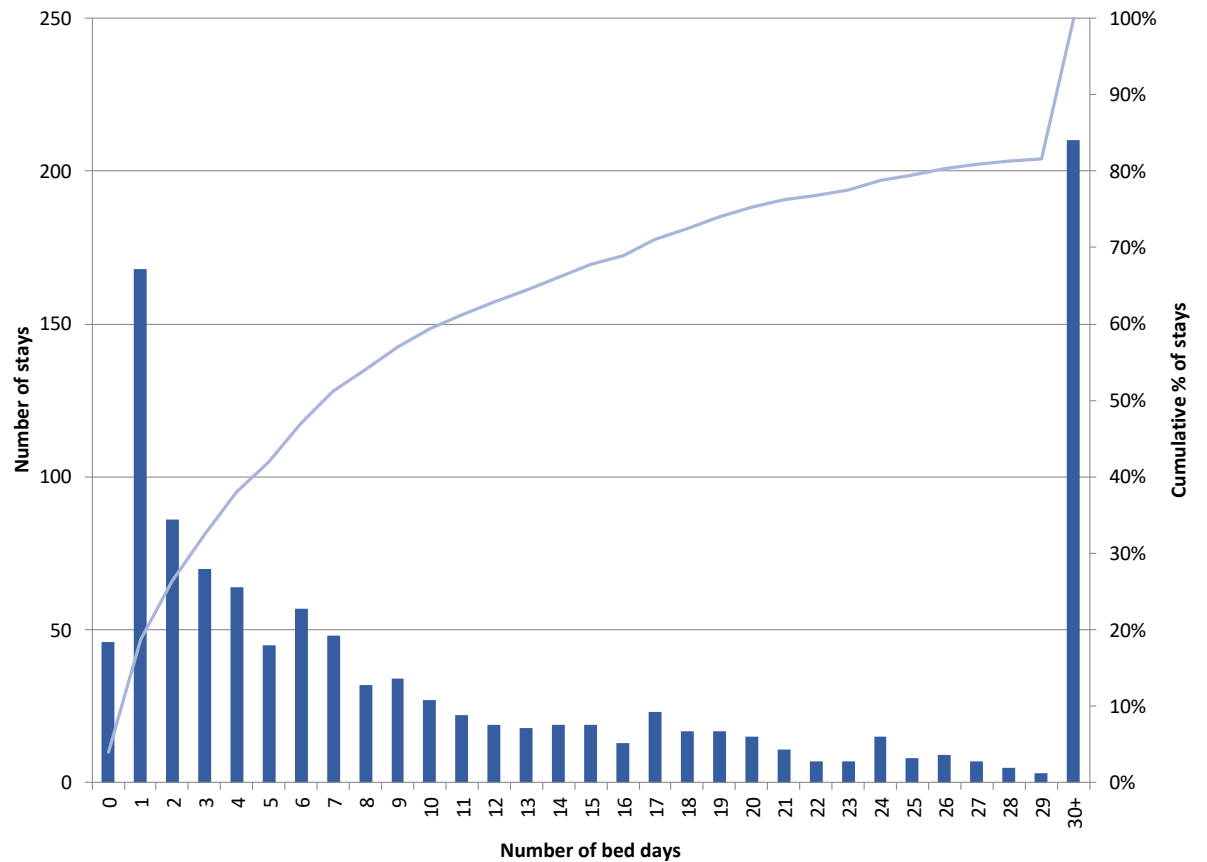
Hospital at Home - Median duration of episode by financial year and NHS Board

NHS Board of Treatment	2014/15	2015/16	2016/17	2017/18	2018/19	2019/20	2020/21	2021/22
NHS Ayrshire and Arran								3
NHS Borders								6
NHS Fife	6	7	6	6	5	5	5	5
NHS Forth Valley						6		4
NHS Grampian					4	4	4	4
NHS Greater Glasgow								5
NHS Lanarkshire	4	5	4	5	6	5	5	6
NHS Lothian	7	6	5	5	5	4	3	4
NHS Tayside							8	6
NHS Western Isles							4	5

University Hospital Crosshouse

University Hospital Crosshouse: Acute geriatric medicine admission length of stays for adults aged 65 and over 2021/22

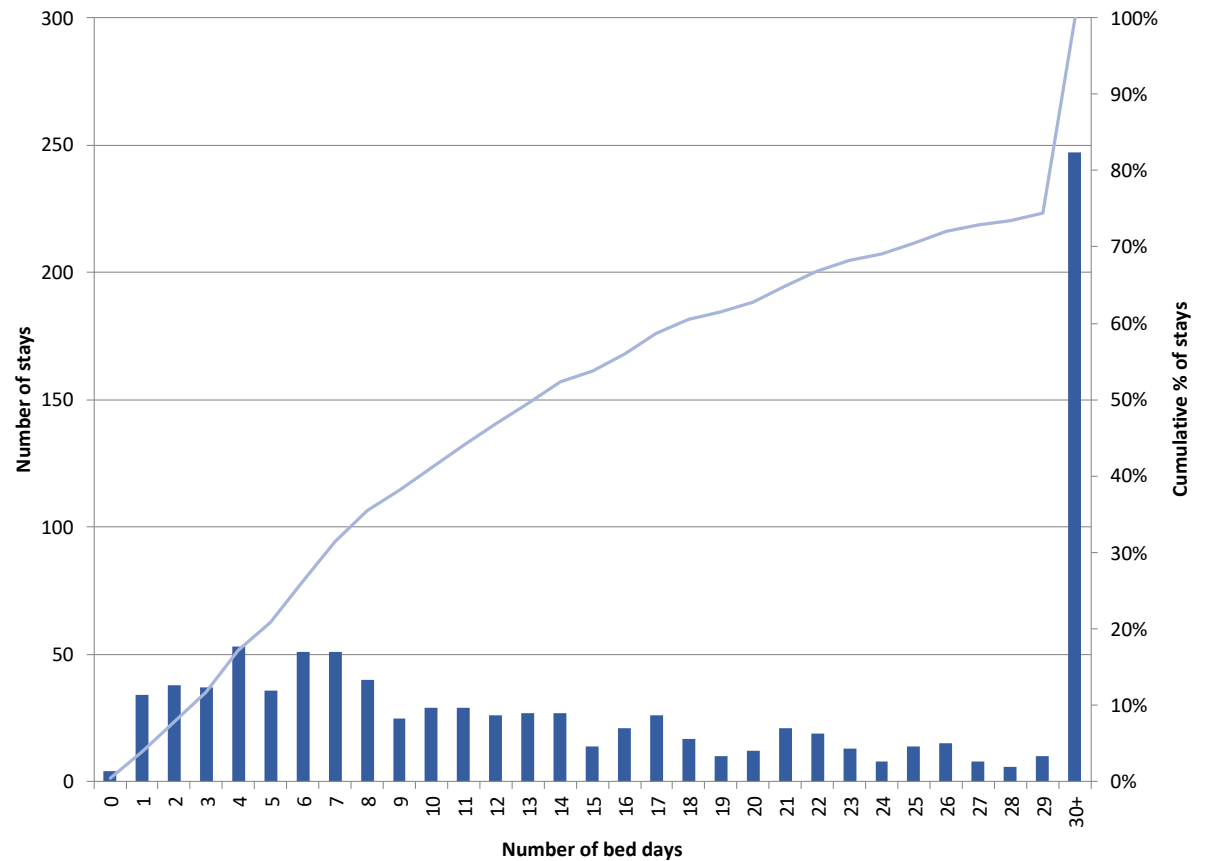
Total throughput 2021/22 = 1141
 %Change since 2017-19 mean = -8.9%
 Age 85+% = 32.0% (rank 19)
 Most deprived quintile = 35.1% (rank 4)
 Median LOS = 7 days (rank 4)
 Change since 2017-19 mean = -6 days
 Readmissions 7 days = 4.4% (rank 1)
 Readmissions 28 days = 13.8% (rank 7)
 Mortality 30 days 12.9% (rank 1)



Borders General Hospital

Total throughput 2021/22 = 1235
 %Change since 2017-19 mean = +11.6%
 Age 85+% = 54.8% (rank 7)
 Most deprived quintile = 7.7% (rank 17)
 Median LOS = 14 days (rank 14)
 Change since 2017-19 mean = -6 days
 Readmissions 7 days = 5.4% (rank 8)
 Readmissions 28 days = 11.9% (rank 1)
 Mortality 30 days 19.1% (rank 16)

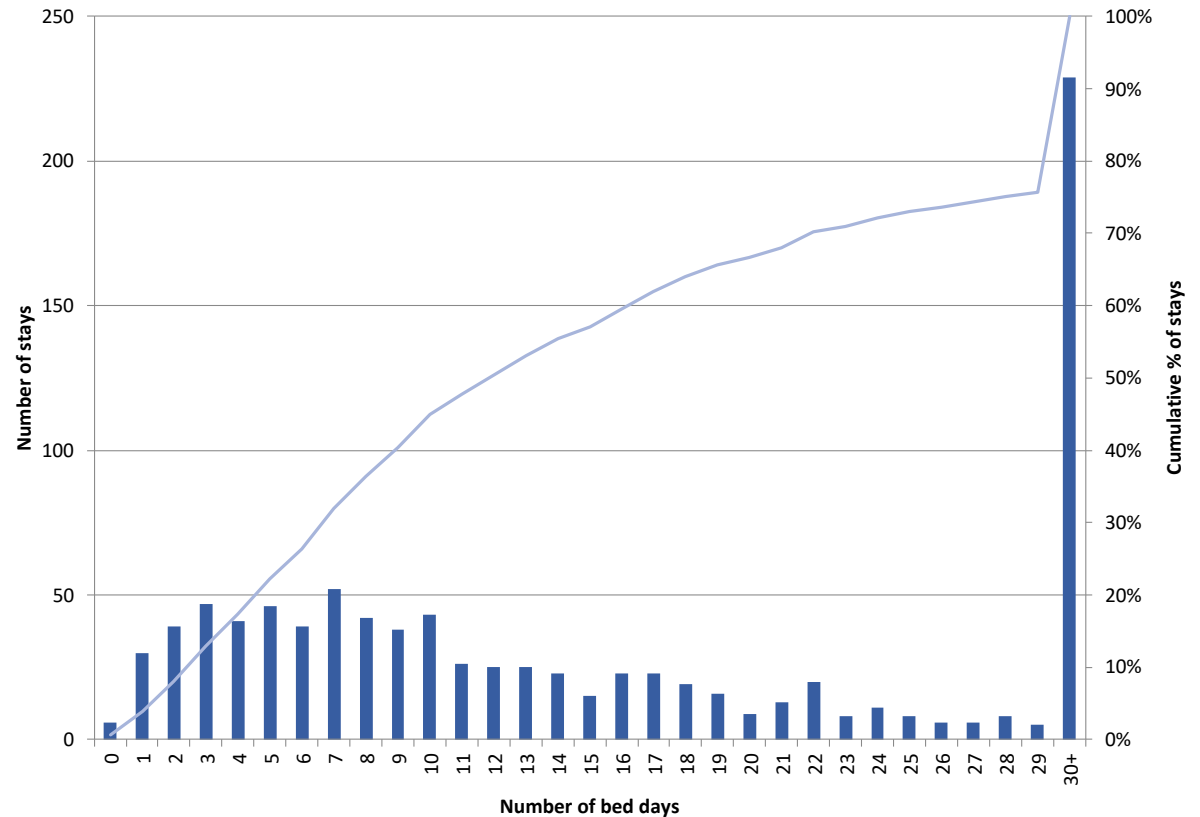
Borders General Hospital: Acute geriatric medicine admission length of stays for adults aged 65 and over 2021/22



Dumfries & Galloway Royal Hospital

Dumfries & Galloway Royal Hospital: Acute geriatric medicine admission length of stays for adults aged 65 and over 2021/22

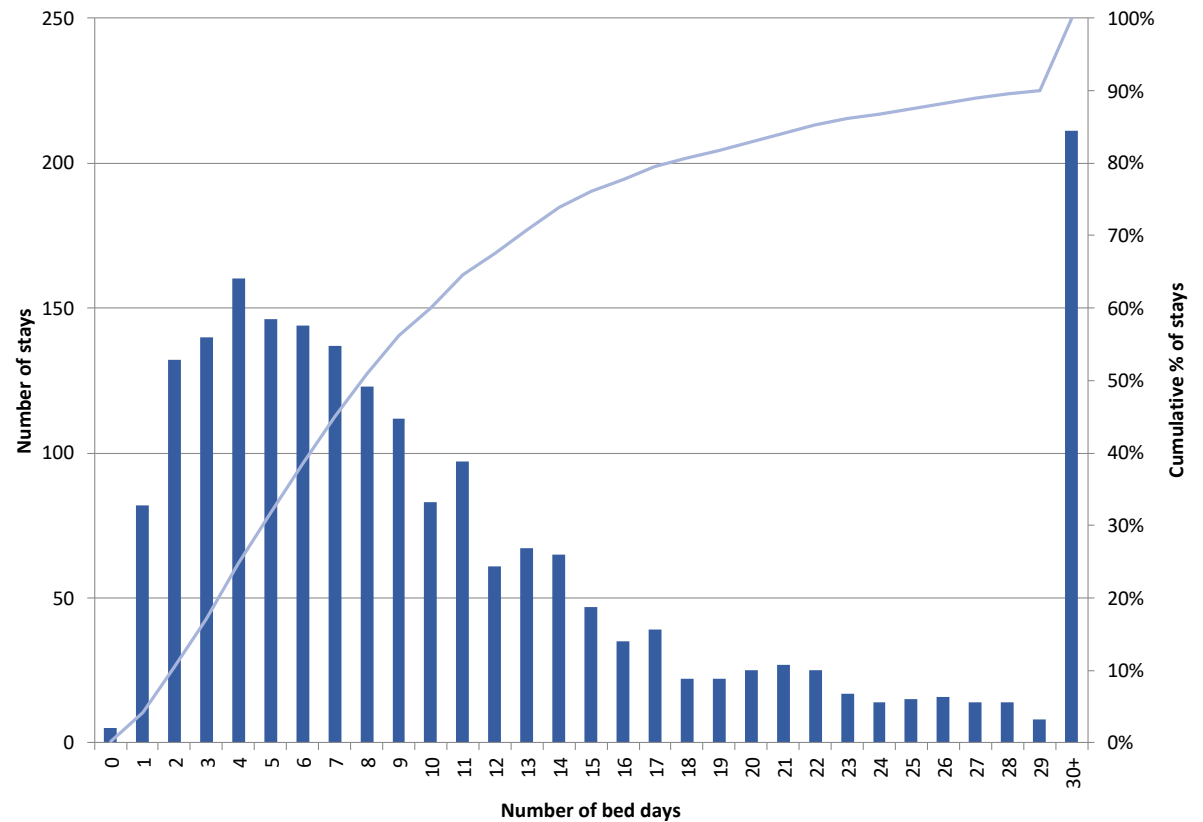
Total throughput 2021/22 = 941
 %Change since 2017-19 mean = -18.7%
 Age 85+% = 55.0% (rank 5)
 Most deprived quintile = 6.6% (rank 18)
 Median LOS = 12 days (rank 11)
 Change since 2017-19 mean = +2 days
 Readmissions 7 days = 5.3% (rank 6)
 Readmissions 28 days = 14.3% (rank 10)
 Mortality 30 days 21.0% (rank 19)



Victoria Hospital

Victoria Hospital: Acute geriatric medicine admission length of stays for adults aged 65 and over 2021/22

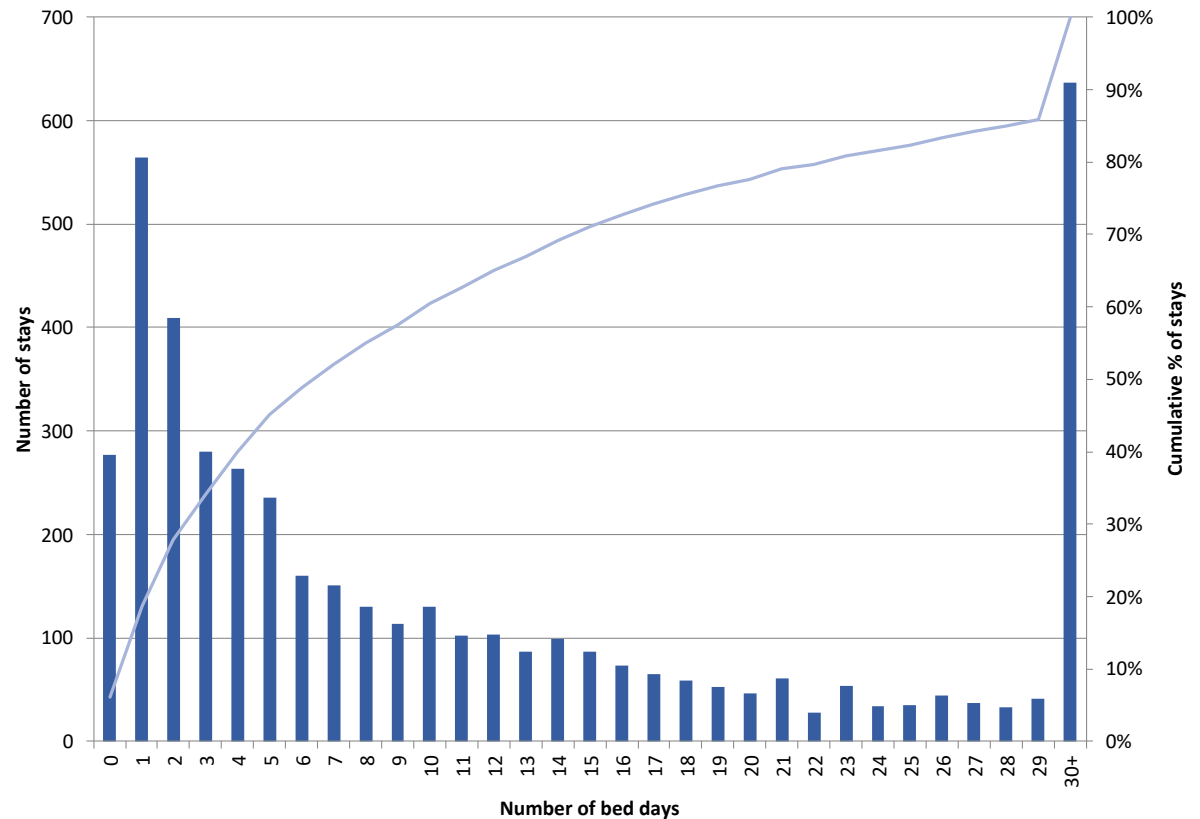
Total throughput 2021/22 = 2105
 %Change since 2017-19 mean = +21.1%
 Age 85+% = 46.7% (rank 8)
 Most deprived quintile = 22.6% (rank 8)
 Median LOS = 8 days (rank 6)
 Change since 2017-19 mean = -1 day
 Readmissions 7 days = 5.8% (rank 12)
 Readmissions 28 days = 14.5% (rank 12)
 Mortality 30 days 17.5% (rank 13)



Forth Valley Royal Hospital

Forth Valley Royal Hospital: Acute geriatric medicine admission length of stays for adults aged 65 and over 2021/22

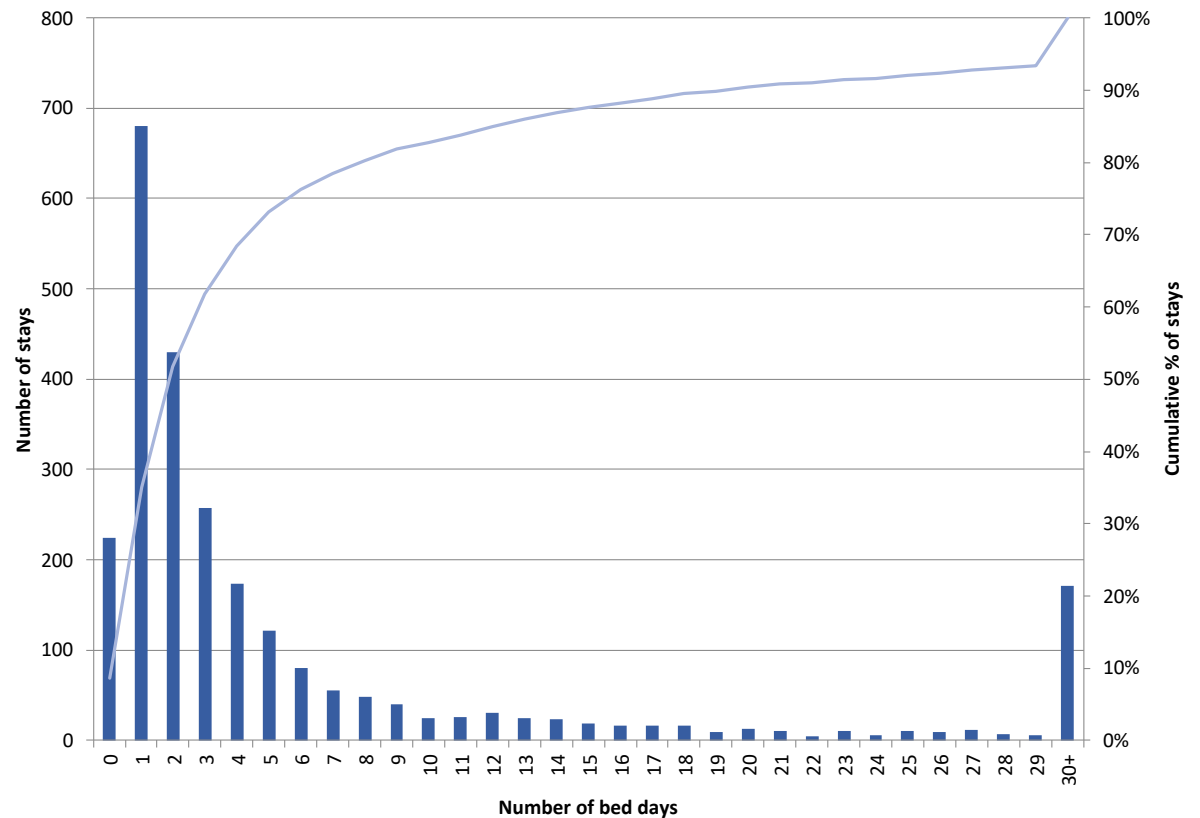
Total throughput 2021/22 = 4492
 %Change since 2017-19 mean = -7.5%
 Age 85+% = 41.2% (rank 16)
 Most deprived quintile = 18.3% (rank 11)
 Median LOS = 7 days (rank 5)
 Change since 2017-19 mean = +1 day
 Readmissions 7 days = 5.8% (rank 11)
 Readmissions 28 days = 13.6% (rank 5)
 Mortality 30 days 17.3% (rank 10)



Aberdeen Royal Infirmary

Aberdeen Royal Infirmary: Acute geriatric medicine admission length of stays for adults aged 65 and over 2021/22

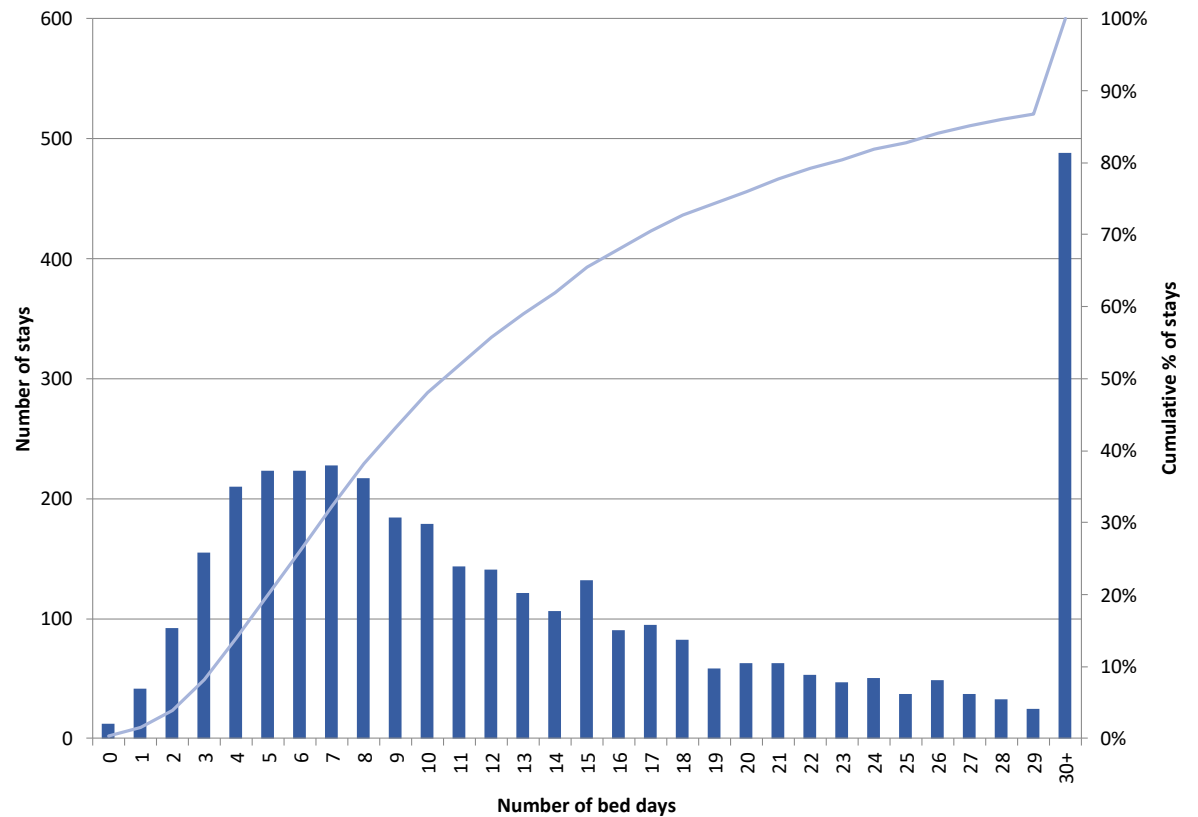
Total throughput 2021/22 = 2578
 %Change since 2017-19 mean = -27.0%
 Age 85+% = 56.2% (rank 4)
 Most deprived quintile = 8.0% (rank 16)
 Median LOS = 2 days (rank 1)
 Change since 2017-19 mean = -1 day
 Readmissions 7 days = 8.6% (rank 19)
 Readmissions 28 days = 18.1% (rank 17)
 Mortality 30 days 14.6% (rank 7)



Glasgow Royal Infirmary

Glasgow Royal Infirmary: Acute geriatric medicine admission length of stays for adults aged 65 and over 2021/22

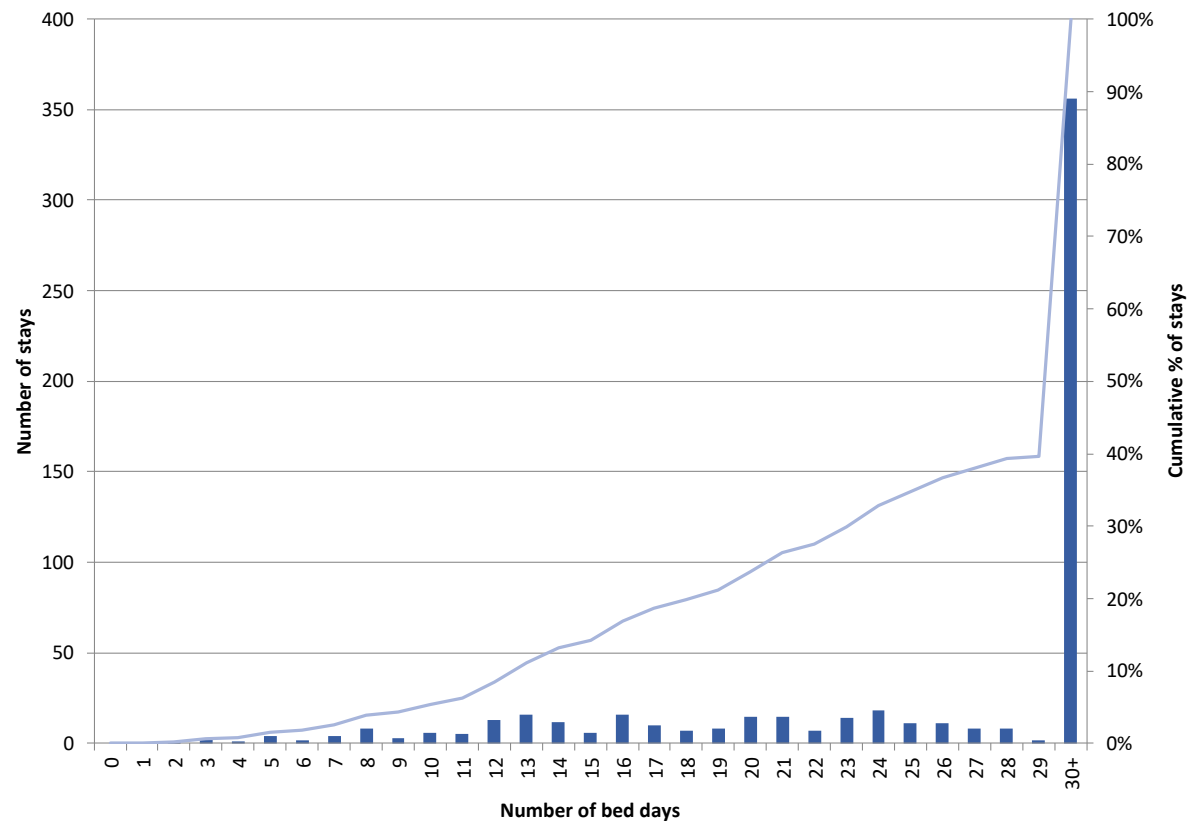
Total throughput 2021/22 = 3678
 %Change since 2017-19 mean = -11.7%
 Age 85+% = 42.8% (rank 14)
 Most deprived quintile = 50.7% (rank 1)
 Median LOS = 11 days (rank 10)
 Change since 2017-19 mean = +2 days
 Readmissions 7 days = 5.2% (rank 4)
 Readmissions 28 days = 14.8% (rank 13)
 Mortality 30 days 14.4% (rank 6)



Inverclyde Royal Hospital

Total throughput 2021/22 = 590
 %Change since 2017-19 mean = -33.7%
 Age 85+% = 43.2% (rank 13)
 Most deprived quintile = 46.8% (rank 2)
 Median LOS = 35 days (rank 19)
 Change since 2017-19 mean = +9 days
 Readmissions 7 days = 5.6% (rank 9)
 Readmissions 28 days = 13.9% (rank 8)
 Mortality 30 days 14.2% (rank 5)

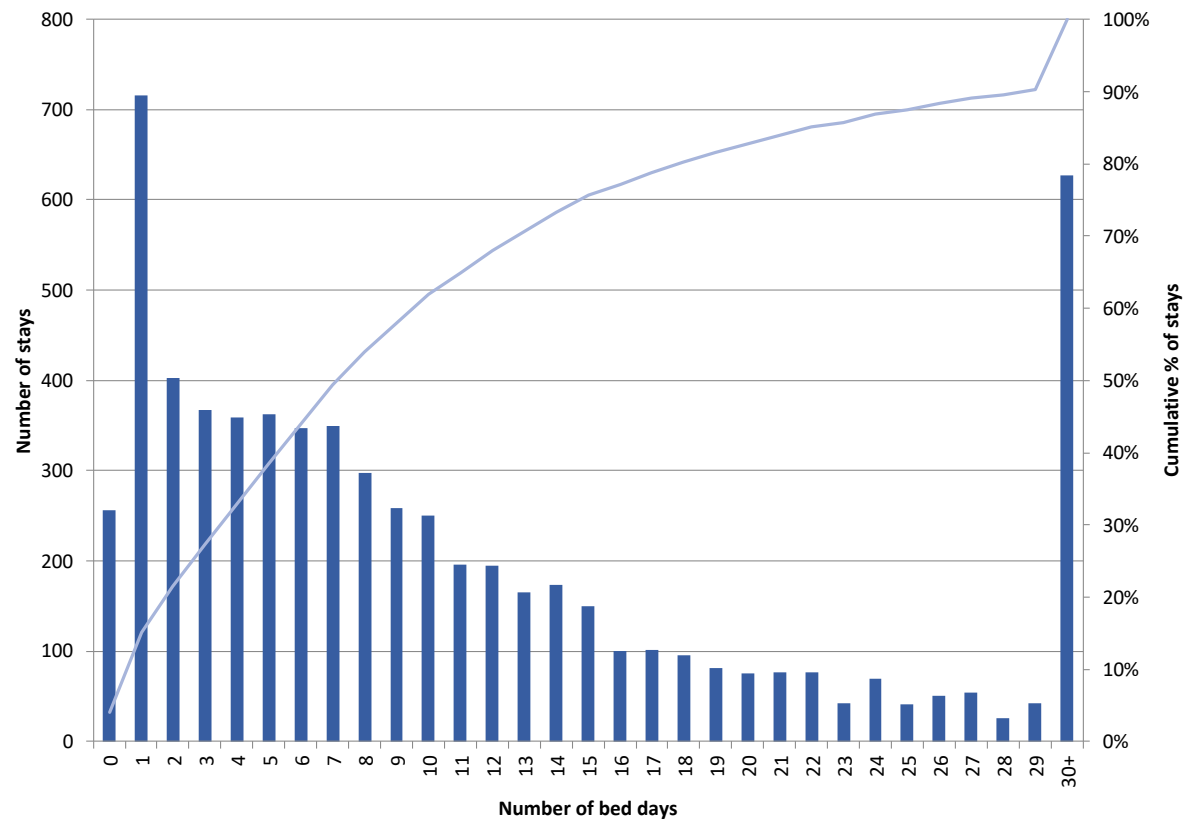
Inverclyde Royal Hospital: Acute geriatric medicine admission length of stays for adults aged 65 and over 2021/22



Queen Elizabeth University Hospital

Queen Elizabeth University Hospital: Acute geriatric medicine admission length of stays for adults aged 65 and over 2021/22

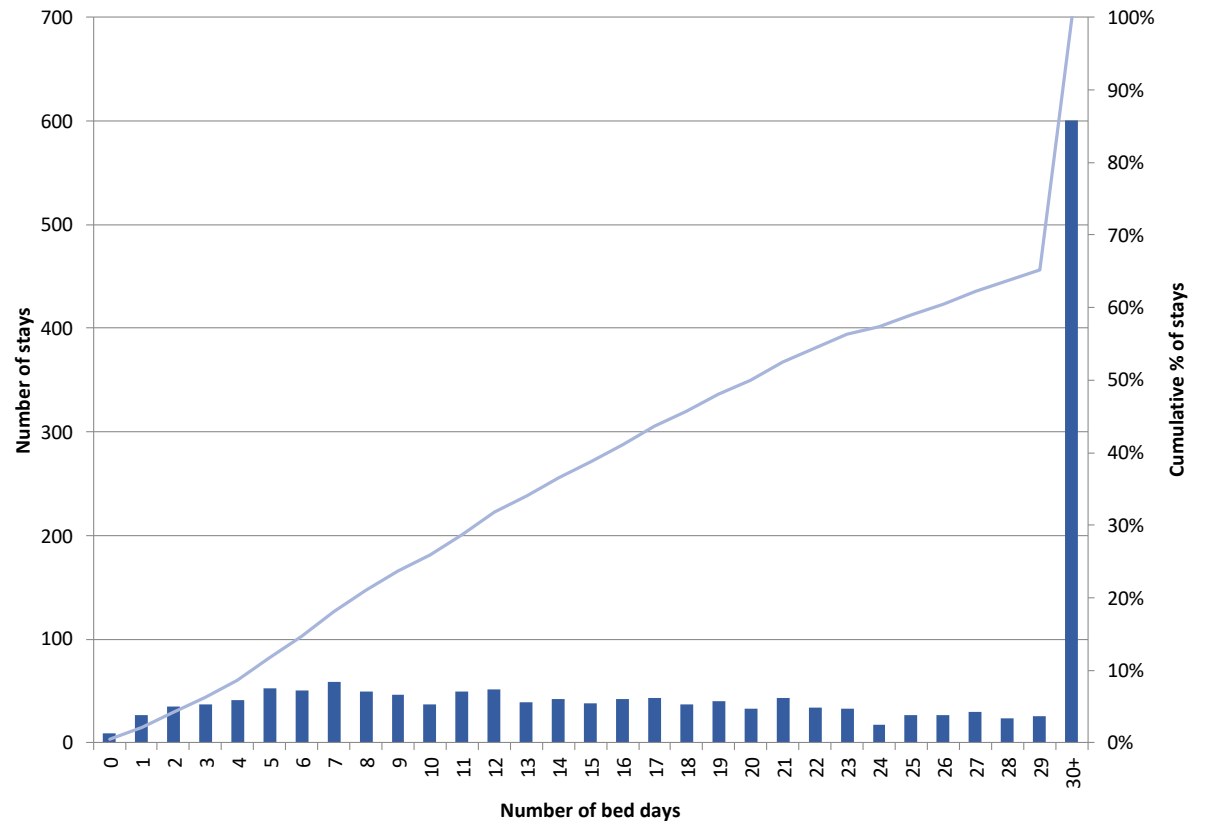
Total throughput 2021/22 = 6409
 %Change since 2017-19 mean = -3.1%
 Age 85+% = 45.7% (rank 9)
 Most deprived quintile = 32.8% (rank 5)
 Median LOS = 8 days (rank 7)
 Change since 2017-19 mean = 0 days
 Readmissions 7 days = 5.8% (rank 13)
 Readmissions 28 days = 14.5% (rank 11)
 Mortality 30 days 13.6% (rank 2)



Royal Alexandra Hospital

Royal Alexandra Hospital: Acute geriatric medicine admission length of stays for adults aged 65 and over 2021/22

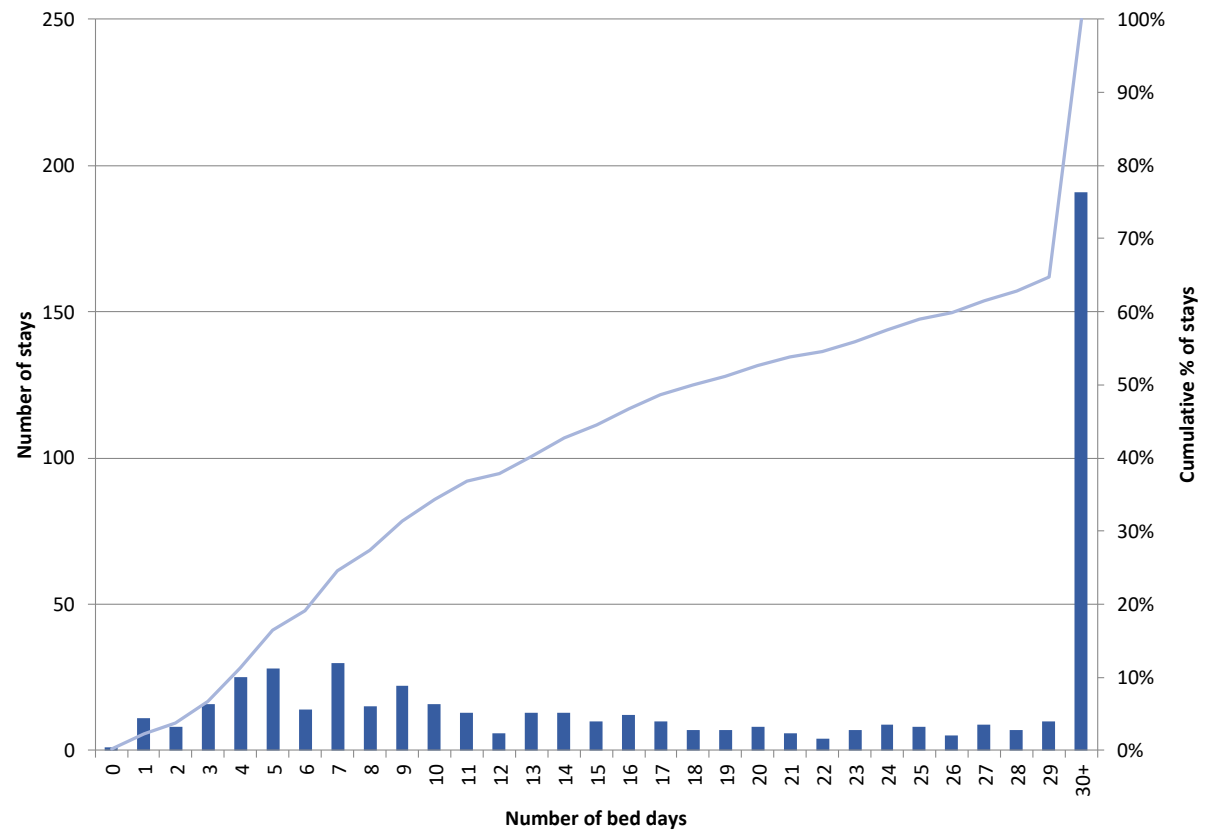
Total throughput 2021/22 = 1722
 %Change since 2017-19 mean = -16.6%
 Age 85+% = 44.1% (rank 12)
 Most deprived quintile = 27.1% (rank 7)
 Median LOS = 21 days (rank 18)
 Change since 2017-19 mean = +4 days
 Readmissions 7 days = 5.1% (rank 2)
 Readmissions 28 days = 13.0% (rank 3)
 Mortality 30 days 13.9% (rank 3)



Raigmore Hospital

Raigmore Hospital: Acute geriatric medicine admission length of stays for adults aged 65 and over 2021/22

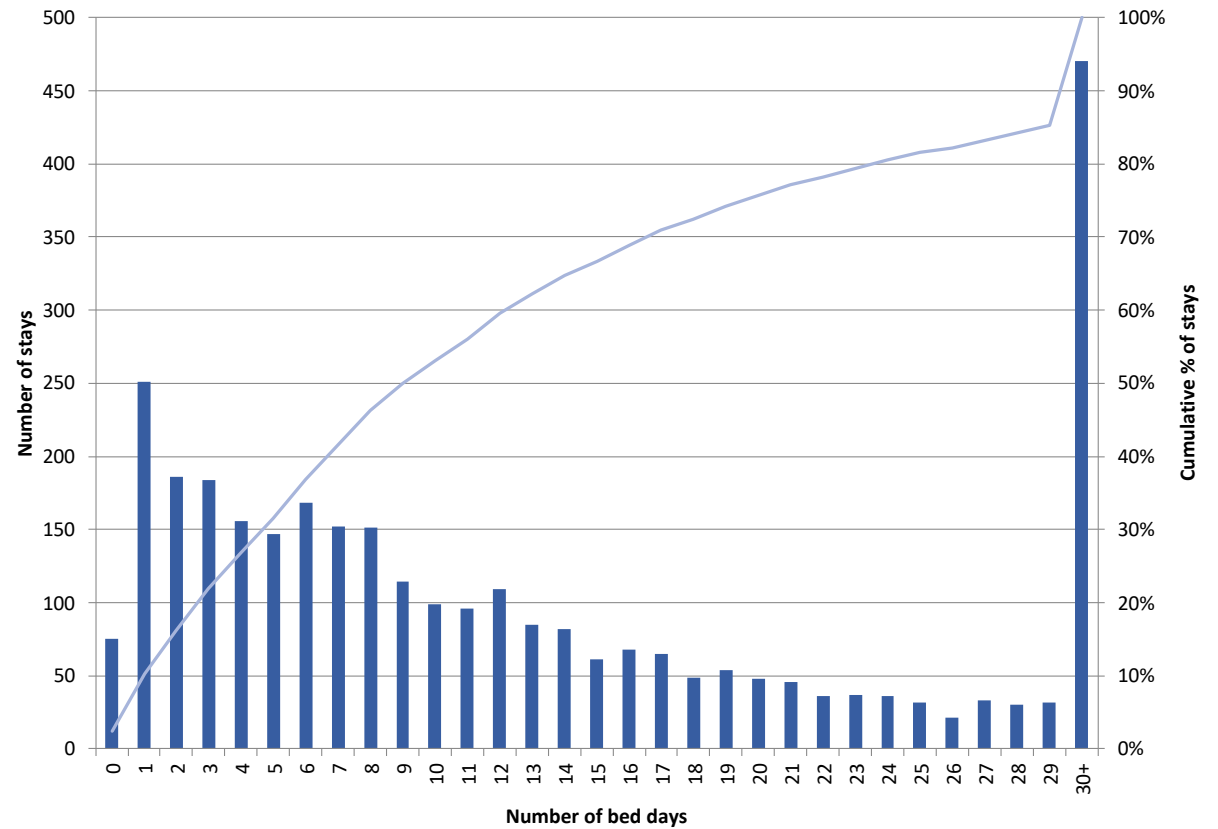
Total throughput 2021/22 = 541
 %Change since 2017-19 mean = -14.8%
 Age 85+% = 44.7% (rank 11)
 Most deprived quintile = 12.4% (rank 13)
 Median LOS = 19 days (rank 17)
 Change since 2017-19 mean = +5 days
 Readmissions 7 days = 5.9% (rank 14)
 Readmissions 28 days = 12.8% (rank 2)
 Mortality 30 days 17.4% (rank 12)



University Hospital Hairmyres

University Hospital Hairmyres: Acute geriatric medicine admission length of stays for adults aged 65 and over 2021/22

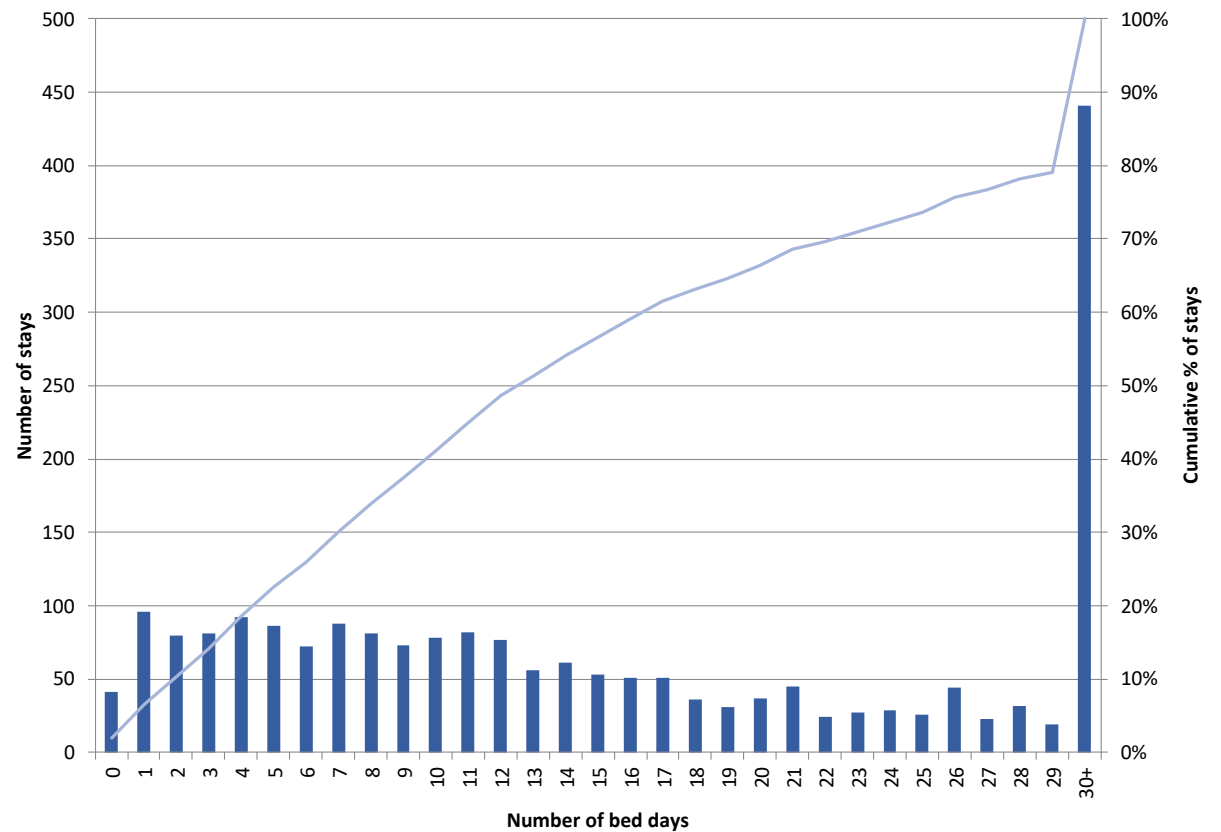
Total throughput 2021/22 = 3173
 %Change since 2017-19 mean = +12.4%
 Age 85+% = 45.7% (rank 10)
 Most deprived quintile = 22.5% (rank 9)
 Median LOS = 10 days (rank 8)
 Change since 2017-19 mean = +1 day
 Readmissions 7 days = 5.1% (rank 3)
 Readmissions 28 days = 15.3% (rank 14)
 Mortality 30 days 19.2% (rank 17)



University Hospital Wishaw

University Hospital Wishaw: Acute geriatric medicine admission length of stays for adults aged 65 and over 2021/22

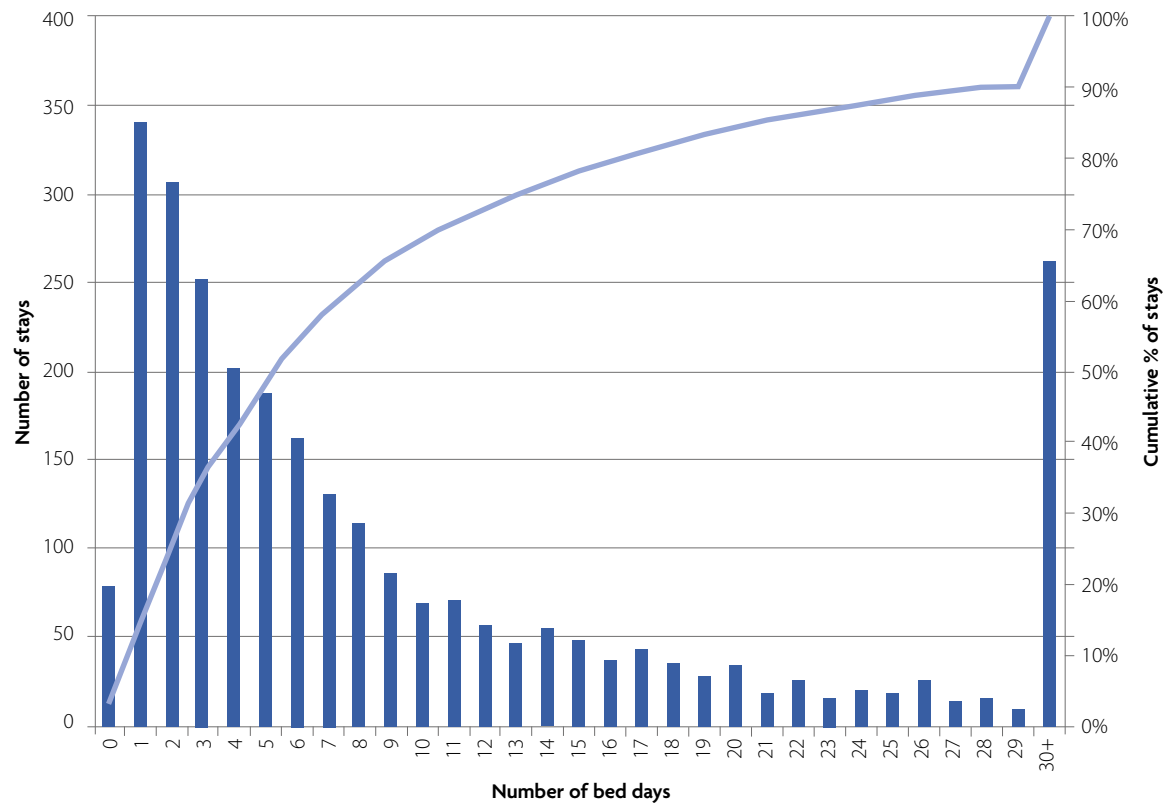
Total throughput 2021/22 = 2113
 %Change since 2017-19 mean = +17.3%
 Age 85+% = 42.6% (rank 15)
 Most deprived quintile = 32.6% (rank 6)
 Median LOS = 13 days (rank 12)
 Change since 2017-19 mean = 0 days
 Readmissions 7 days = 5.3% (rank 5)
 Readmissions 28 days = 13.8% (rank 6)
 Mortality 30 days 20.4% (rank 18)



University Hospital Monklands

University Hospital Monklands: Acute geriatric medicine admission length of stays for adults aged 65 and over 2021/22

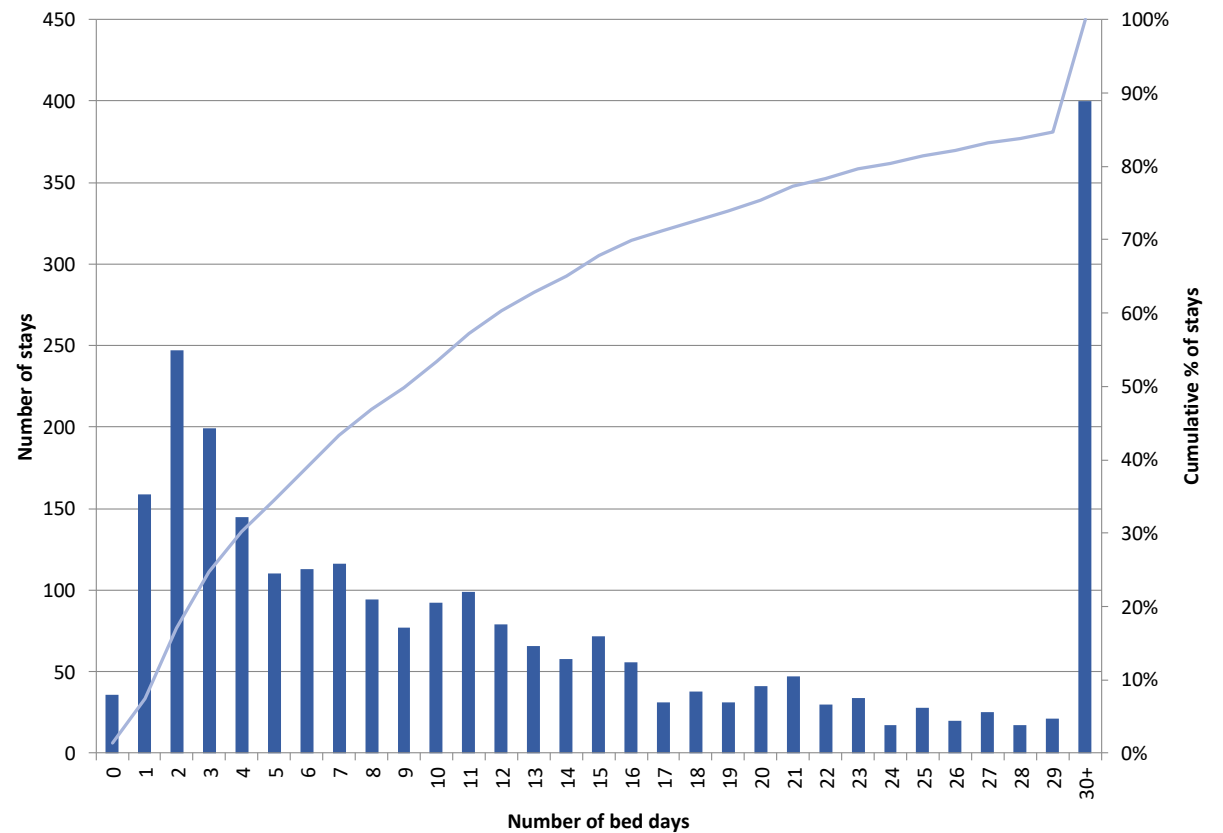
Total throughput 2021/22 = 2814
 %Change since 2017-19 mean = -6.3%
 Age 85+% = 34.6% (rank 18)
 Most deprived quintile = 39.6% (rank 3)
 Median LOS = 6 days (rank 2)
 Change since 2017-19 mean = +1 day
 Readmissions 7 days = 7.7% (rank 18)
 Readmissions 28 days = 19.1% (rank 19)
 Mortality 30 days 18.7% (rank 15)



Royal Infirmary of Edinburgh

Total throughput 2021/22 = 2598
 %Change since 2017-19 mean = +1.2%
 Age 85+% = 56.9% (rank 3)
 Most deprived quintile = 11.0% (rank 14)
 Median LOS = 10 days (rank 9)
 Change since 2017-19 mean = +2 days
 Readmissions 7 days = 5.7% (rank 10)
 Readmissions 28 days = 13.4% (rank 4)
 Mortality 30 days 17.6% (rank 14)

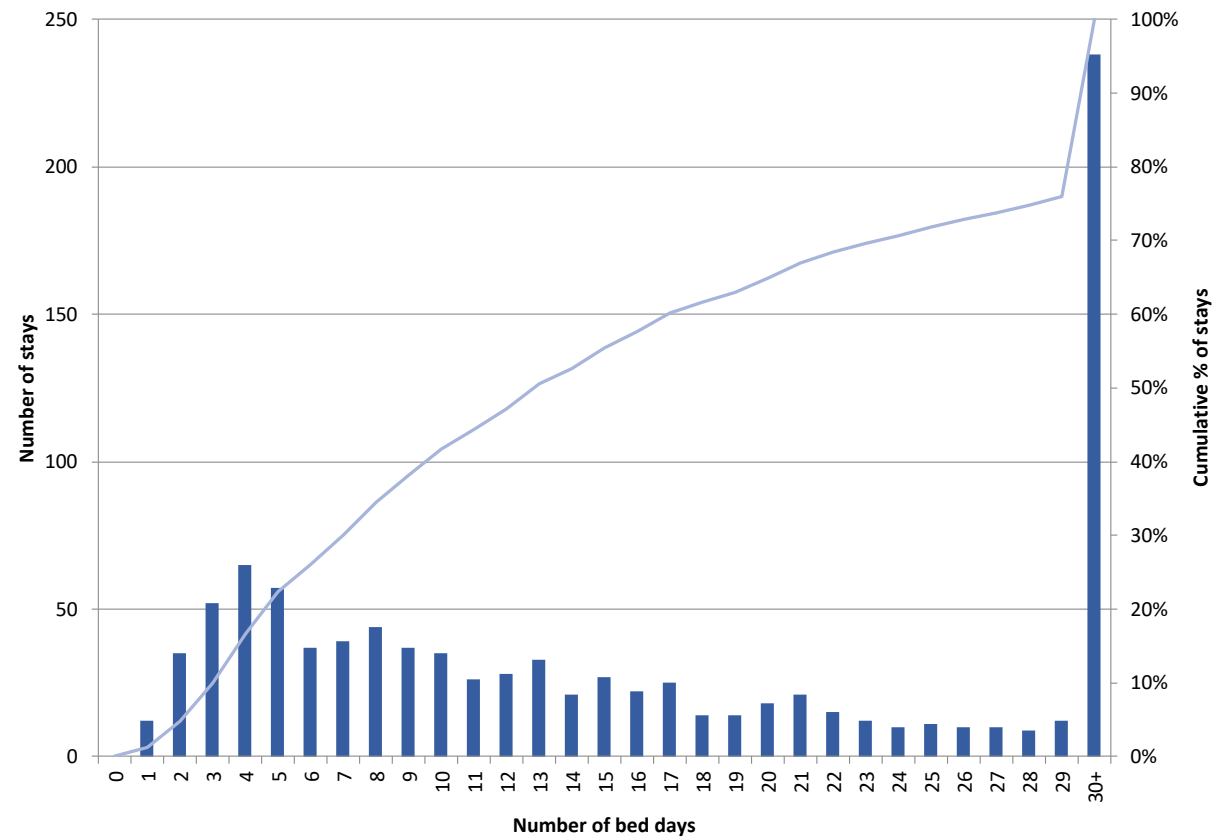
Royal Infirmary of Edinburgh at Little France: Acute geriatric medicine admission length of stays for adults aged 65 and over 2021/22



St John's Hospital

St John's Hospital: Acute geriatric medicine admission length of stays for adults aged 65 and over 2021/22

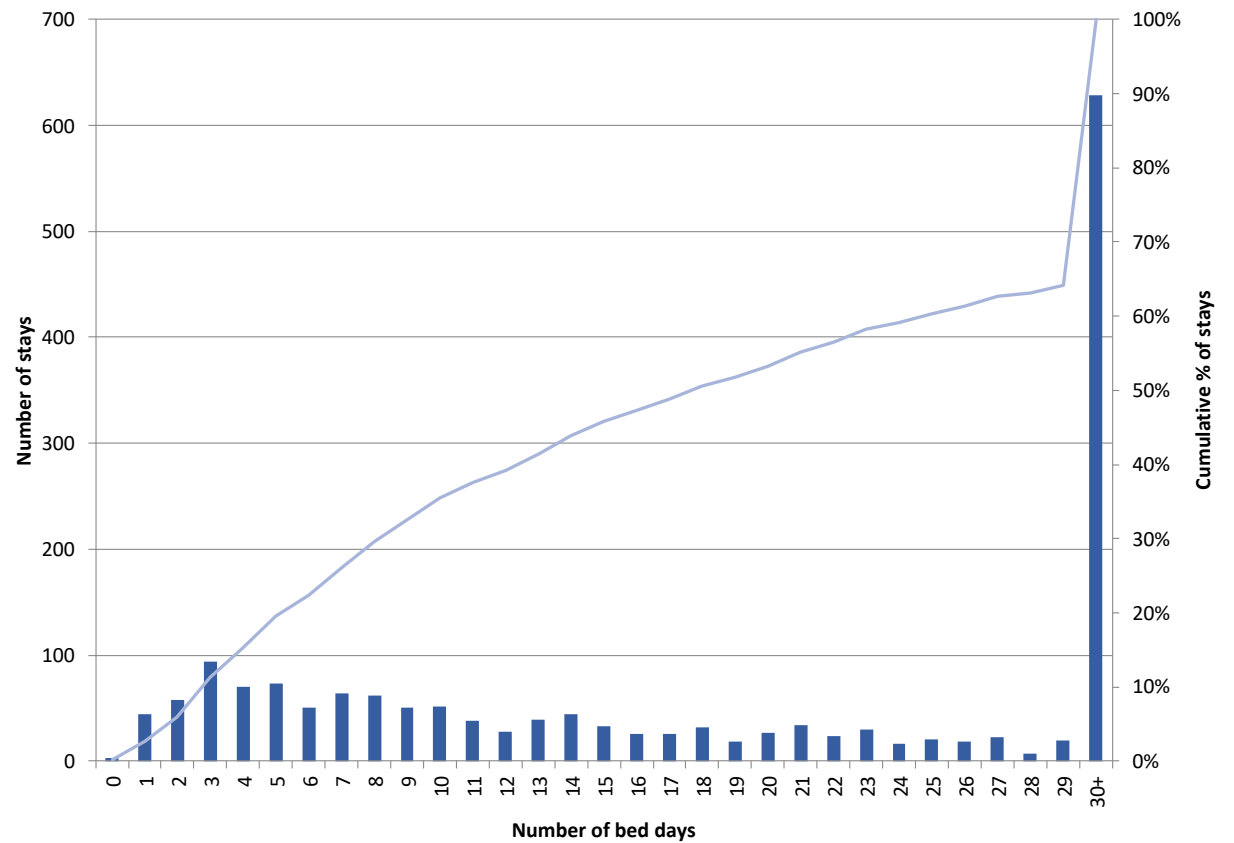
Total throughput 2021/22 = 989
 %Change since 2017-19 mean = +85.9%
 Age 85+% = 36.7% (rank 17)
 Most deprived quintile = 16.3% (rank 12)
 Median LOS = 13 days (rank 13)
 Change since 2017-19 mean = -18 days
 Readmissions 7 days = 7.4% (rank 17)
 Readmissions 28 days = 18.7% (rank 18)
 Mortality 30 days 15.2% (rank 8)



Western General Hospital

Western General Hospital: Acute geriatric medicine admission length of stays for adults aged 65 and over 2021/22

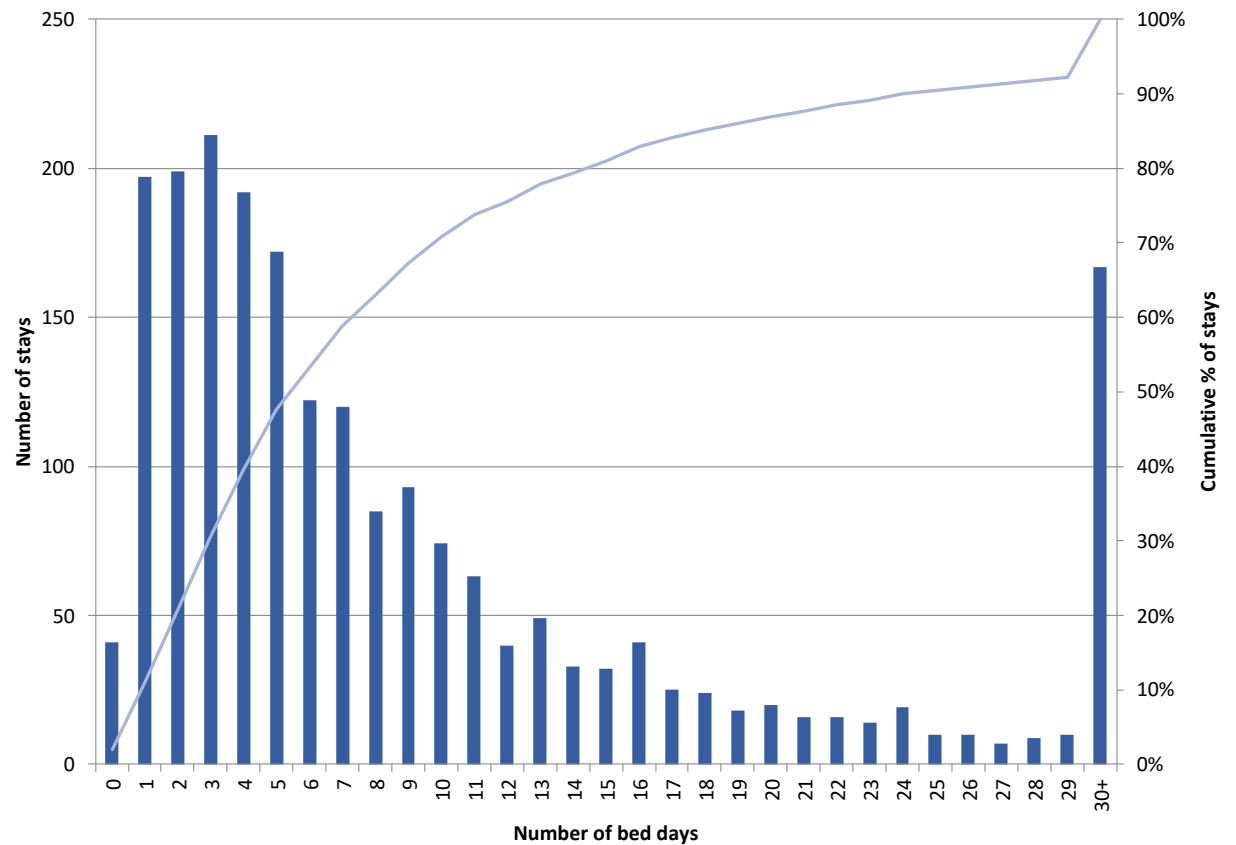
Total throughput 2021/22 = 1755
 %Change since 2017-19 mean = -9.1%
 Age 85+% = 58.5% (rank 2)
 Most deprived quintile, = 36% (rank 4th)
 Median LOS = 18 days (rank 16)
 Change since 2017-19 mean = -7 days
 Readmissions 7 days = 5.4% (rank 7)
 Readmissions 28 days = 14.3% (rank 9)
 Mortality 30 days 16.6% (rank 6)



Ninewells Hospital

Ninewells Hospital: Acute geriatric medicine admission length of stays for adults aged 65 and over 2021/22

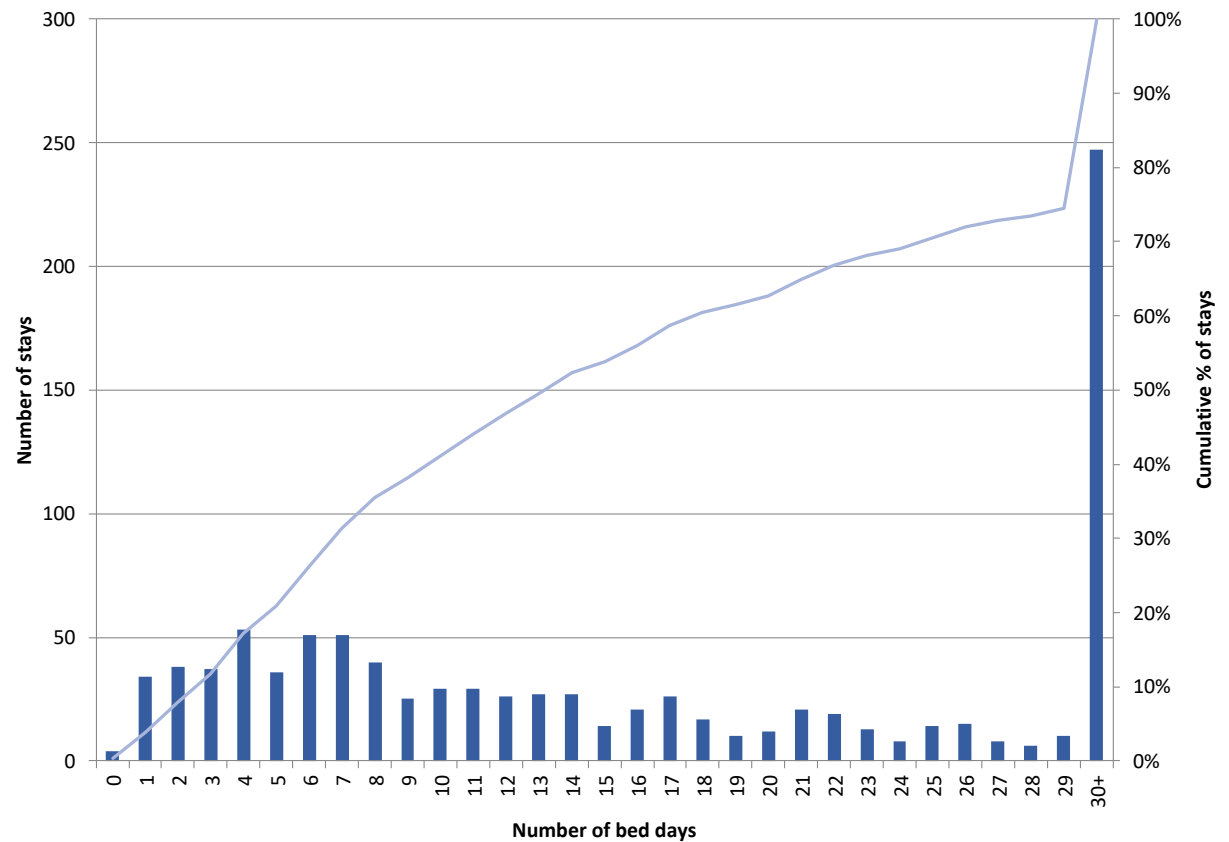
Total throughput 2021/22 = 2129
 %Change since 2017-19 mean = +46.6%
 Age 85+% = 54.9% (rank 6)
 Most deprived quintile = 19.2% (rank 10)
 Median LOS = 6 days (rank 3)
 Change since 2017-19 mean = -4 days
 Readmissions 7 days = 6.4% (rank 15)
 Readmissions 28 days = 16.8% (rank 16)
 Mortality 30 days 17.3% (rank 11)



Perth Royal Infirmary

Perth Royal Infirmary: Acute geriatric medicine admission length of stays for adults aged 65 and over 2021/22

Total throughput 2021/22 = 968
 %Change since 2017-19 mean = +34.4%
 Age 85+% = 59.6% (rank 1)
 Most deprived quintile = 6.2% (rank 19)
 Median LOS = 14 days (rank 15)
 Change since 2017-19 mean = -7 days
 Readmissions 7 days = 7.0% (rank 16)
 Readmissions 28 days = 16.0% (rank 15)
 Mortality 30 days 13.9% (rank 4)



Data

Data from Public Health Scotland Data and Intelligence (formerly Information Services Division)

Data Sources : SMR01 and SMR01E

Date of Extract : 08/12/2022

Data relate to Scottish residents only. NHS boards based on the boundaries as at 1st April 2014.

Health Board: Health Board is Health Board of treatment.

The basic unit of analysis for these figures is a Continuous Inpatient Stay (CIS) in hospital - Probability matching methods have been used to link together individual SMR01/SMR01E hospitals episodes for each patient, thereby creating “linked” patient histories. Within these patient histories, episodes are grouped according to whether they

form part of a continuous spell of treatment (whether or not this involves transfer between specialties, consultants, hospitals or health boards).

Only stays that contained a Geriatric Medicine Speciality code (AB) were selected.

Same day discharges were included in all measures and expressed as percentage of all discharges.

Stays with a main diagnosis of stroke were excluded.

Age : Age (years) relates to the age of the patient on admission.

Types of Admission: Emergency admissions were selected for this output. Data for non acute sites are only available at board level.











BCGS

British Geriatrics Society
Improving healthcare
for older people

SCoOP



GERIATRIC MEDICINE Acute Hospital Outcomes 2021/22 Report

An overview of outcomes of acute geriatric medicine services in Scotland before, during and after the covid

